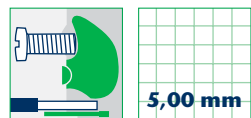
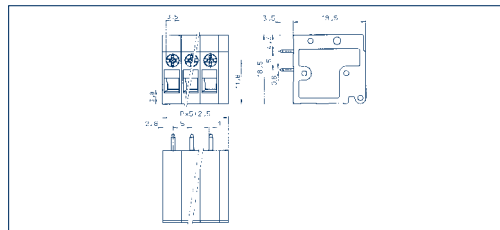


Terminals



PKT 2200/... /5,00-V vertical



Drawings

Connection principle

Dimensions

Spacing mm	5,00
Stripped length mm	9,00
PCB hole diameter mm	1,30

Cross sections

single wire (solid) mm <sup>2</sup>	2,50
stranded wire (flexible) mm <sup>2</sup>	2,50
stranded wire (with ferrules) mm <sup>2</sup>	2,50

Output information

Rated voltage V	300 V
Rated current A	20 A
Cross section max. AWG/mm <sup>2</sup>	30-12
Test voltage	2,00 kV
Rated torque/Screw size	0,5 Nm/M2,5
Dirt level	-

Materials

Insulating material/Flammability class	PA 6.6 V0 / UL 94 V0
Temperature Range	-30°C / +105°C
Clamping part	-
Clamping cage/Eccentric	Fe/Fe
Contact pin	-
Cage tension spring	-
Wire protection	-
Soldering lug	Cu
Contact Spring	-

Order information

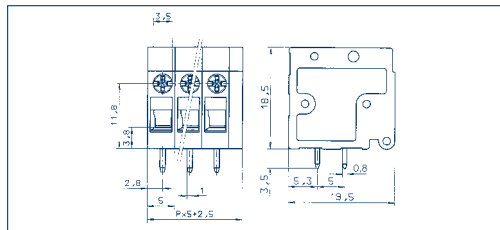
No. of poles	Cat.-No.	Qty.p.pck.
	green	
	(Ral 6018)	

2	10546.1	50
3	10547.1	50
4	10548.1	50
5	10549.1	50
6	10550.1	50
7	10551.1	50
8	10552.1	50
9	10553.1	50
10	10554.1	50
11	10555.1	50
12	10556.1	50
13	10557.1	50
14	10558.1	50
15	10559.1	50
16	10560.1	50
17	10561.1	50
18	10562.1	50
19	10563.1	50
20	10564.1	50
21	10565.1	50
22	10566.1	50
23	10567.1	50
24	10568.1	50

Accessories

Marking Page 124 - 127

PKT 2200/... /5,00-H horizontal



Connection principle

Dimensions

Spacing mm	5,00
Stripped length mm	9,00
PCB hole diameter mm	1,30

Cross sections

single wire (solid) mm <sup>2</sup>	2,50
stranded wire (flexible) mm <sup>2</sup>	2,50
stranded wire (with ferrules) mm <sup>2</sup>	2,50

Output information

Rated voltage V	300 V
Rated current A	20 A
Cross section max. AWG/mm <sup>2</sup>	30-12
Test voltage	2,00 kV
Rated torque/Screw size	0,5 Nm/M2,5
Dirt level	-

Materials

Insulating material/Flammability class	PA 6.6 V0 / UL 94 V0
Temperature Range	-30°C / +105°C
Clamping part	-
Clamping cage/Eccentric	Fe/Fe
Contact pin	-
Cage tension spring	-
Wire protection	-
Soldering lug	Cu
Contact Spring	-

Order information

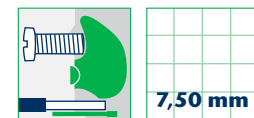
No. of poles	Cat.-No.	Qty.p.pck.
	green	
	(Ral 6018)	

2	10570.1	50
3	10571.1	50
4	10572.1	50
5	10573.1	50
6	10574.1	50
7	10575.1	50
8	10576.1	50
9	10577.1	50
10	10578.1	50
11	10579.1	50
12	10580.1	50
13	10581.1	50
14	10582.1	50
15	10583.1	50
16	10584.1	50
17	10585.1	50
18	10586.1	50
19	10587.1	50
20	10588.1	50
21	10589.1	50
22	10590.1	50
23	10591.1	50
24	10592.1	50

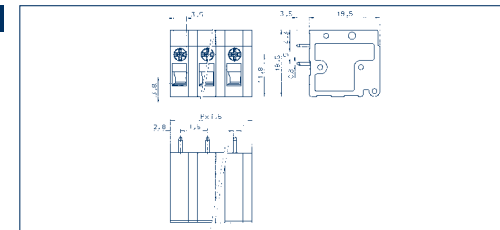
Accessories

Marking Page 124 - 127

Terminals



PKT 2200/... /7,50-V vertical



Drawings

Connection principle

Dimensions

Spacing mm	7,50
Stripped length mm	9,00
PCB hole diameter mm	1,30

Cross sections

single wire (solid) mm <sup>2</sup>	2,50
stranded wire (flexible) mm <sup>2</sup>	2,50
stranded wire (with ferrules) mm <sup>2</sup>	2,50

Output information

Rated voltage V	300 V
Rated current A	20 A
Cross section max. AWG/mm <sup>2</sup>	30-12
Test voltage	3,00 kV
Rated torque/Screw size	0,5 Nm/M2,5
Dirt level	-

Materials

Insulating material/Flammability class	PA 6.6 V0 / UL 94 V0
Temperature Range	-30°C / +105°C
Clamping part	-
Clamping cage/Eccentric	Fe/Fe
Contact pin	-
Cage tension spring	-
Wire protection	-
Soldering lug	Cu
Contact Spring	-

Order information

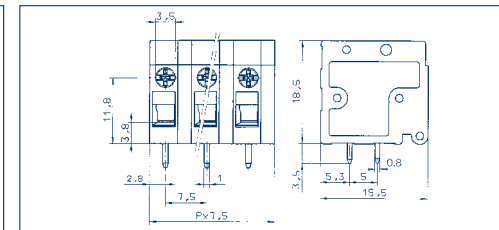
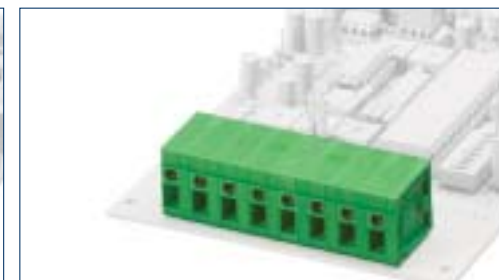
No. of poles	Cat.-No.	Qty.p.pck.
	green	
	(Ral 6018)	

2	10594.1	50
3	10595.1	50
4	10596.1	50
5	10597.1	50
6	10598.1	50
7	10599.1	50
8	10600.1	50
9	10601.1	50
10	10602.1	50
11	10603.1	50
12	10604.1	50
13	10605.1	50
14	10606.1	50
15	10607.1	50
16	10608.1	50
17	10609.1	50
18	10610.1	50
19	10611.1	50
20	10612.1	50
21	10613.1	50
22	10614.1	50
23	10615.1	50
24	10616.1	50

Accessories

Marking Page 124 - 127

PKT 2200/... /7,50-H horizontal



Connection principle

Dimensions

Spacing mm	7,50
Stripped length mm	9,00
PCB hole diameter mm	1,30

Cross sections

single wire (solid) mm <sup>2</sup>	2,50
stranded wire (flexible) mm <sup>2</sup>	2,50
stranded wire (with ferrules) mm <sup>2</sup>	2,50

Output information

Rated voltage V	300 V
Rated current A	20 A
Cross section max. AWG/mm <sup>2</sup>	30-12
Test voltage	3,00 kV
Rated torque/Screw size	0,5 Nm/M2,5
Dirt level	-

Materials

Insulating material/Flammability class	PA 6.6 V0 / UL 94 V0
Temperature Range	-30°C / +105°C
Clamping part	-
Clamping cage/Eccentric	Fe/Fe
Contact pin	-
Cage tension spring	-
Wire protection	-
Soldering lug	Cu
Contact Spring	-

Order information

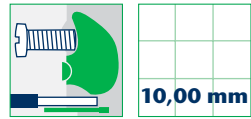
No. of poles	Cat.-No.	Qty.p.pck.
	green	
	(Ral 6018)	

2	10618.1	50
3	10619.1	50
4	10620.1	50
5	10621.1	50
6	10622.1	50
7	10623.1	50
8	10624.1	50
9	10625.1	50
10	10626.1	50
11	10627.1	50
12	10628.1	50
13	10629.1	50
14	10630.1	50
15	10631.1	50
16	10632.1	50
17	10633.1	50
18	10634.1	50
19	10635.1	50
20	10636.1	50
21	10637.1	50
22	10638.1	50
23	10639.1	50
24	10640.1	50

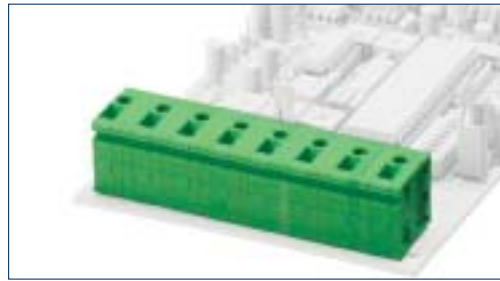
Accessories

Marking Page 124 - 127

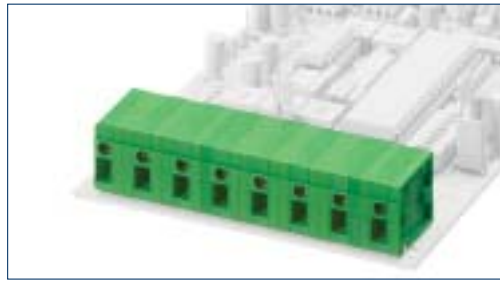
Terminals



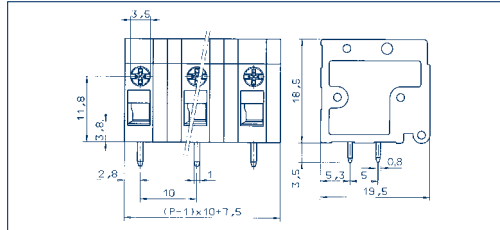
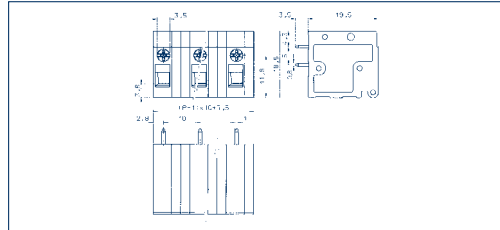
PKT 2200/... /10,00-V vertical



PKT 2200/... /10,00-H horizontal



Drawings



Connection principle

Dimensions

Spacing mm	10,00
Stripped length mm	9,00
PCB hole diameter mm	1,30

Cross sections

single wire (solid) mm <sup>2</sup>	2,50
stranded wire (flexible) mm <sup>2</sup>	2,50
stranded wire (with ferrules) mm <sup>2</sup>	2,50

Output information

Rated voltage V	600 V	1000 V
Rated current A	20 A	24 A (T60)
Cross section max. AWG/mm <sup>2</sup>	30-12	2,50
Test voltage	-	3,50 kV
Rated torque/Screw size	-	0,5 Nm/M2,5
Dirt level	-	-

Materials

Insulating material/Flammability class	PA 6.6 V0 / UL 94 V0
Temperature Range	-30°C / +105°C
Clamping part	-
Clamping cage/Eccentric	Fe/Fe
Contact pin	-
Cage tension spring	-
Wire protection	-
Soldering lug	Cu
Contact Spring	-

Order information

Standard colour(s)	● green
(further colours on request, see page 5)	(Ral 6018)

No. of poles	Cat.-No.	Qty.p.pck.
2	10642.1	50
3	10643.1	50
4	10644.1	50
5	10645.1	50
6	10646.1	50
7	10647.1	50
8	10648.1	50
9	10649.1	50
10	10650.1	50
11	10651.1	50
12	10652.1	50
13	10653.1	50
14	10654.1	50
15	10655.1	50
16	10656.1	50
17	10657.1	50
18	10658.1	50
19	10659.1	50
20	10660.1	50
21	10661.1	50
22	10662.1	50
23	10663.1	50
24	10664.1	50

Accessories

Marking	Page 124 - 127
---------	----------------

Eccentric-top

Spacing mm	10,00
Stripped length mm	9,00
PCB hole diameter mm	1,30

Cross sections

single wire (solid) mm <sup>2</sup>	2,50
stranded wire (flexible) mm <sup>2</sup>	2,50
stranded wire (with ferrules) mm <sup>2</sup>	2,50

Output information

Rated voltage V	600 V	1000 V
Rated current A	20 A	24 A (T60)
Cross section max. AWG/mm <sup>2</sup>	30-12	2,50
Test voltage	-	3,50 kV
Rated torque/Screw size	-	0,5 Nm/M2,5
Dirt level	-	-

Materials

Insulating material/Flammability class	PA 6.6 V0 / UL 94 V0
Temperature Range	-30°C / +105°C
Clamping part	-
Clamping cage/Eccentric	Fe/Fe
Contact pin	-
Cage tension spring	-
Wire protection	-
Soldering lug	Cu
Contact Spring	-

Order information

Standard colour(s)	● green
(further colours on request, see page 5)	(Ral 6018)

No. of poles	Cat.-No.	Qty.p.pck.
2	10642.1	50
3	10643.1	50
4	10644.1	50
5	10645.1	50
6	10646.1	50
7	10647.1	50
8	10648.1	50
9	10649.1	50
10	10650.1	50
11	10651.1	50
12	10652.1	50
13	10653.1	50
14	10654.1	50
15	10655.1	50
16	10656.1	50
17	10657.1	50
18	10658.1	50
19	10659.1	50
20	10660.1	50
21	10661.1	50
22	10662.1	50
23	10663.1	50
24	10664.1	50

Accessories

Marking	Page 124 - 127
---------	----------------

Eccentric-top

Spacing mm	10,00
Stripped length mm	9,00
PCB hole diameter mm	1,30

Cross sections

single wire (solid) mm <sup>2</sup>	2,50
stranded wire (flexible) mm <sup>2</sup>	2,50
stranded wire (with ferrules) mm <sup>2</sup>	2,50

Output information

Rated voltage V	600 V	1000 V
Rated current A	20 A	24 A (T60)
Cross section max. AWG/mm <sup>2</sup>	30-12	2,50
Test voltage	-	3,00 kV
Rated torque/Screw size	-	0,5 Nm/M2,5
Dirt level	-	-

Materials

Insulating material/Flammability class	PA 6.6 V0 / UL 94 V0
Temperature Range	-30°C / +105°C
Clamping part	-
Clamping cage/Eccentric	Fe/Fe
Contact pin	-
Cage tension spring	-
Wire protection	-
Soldering lug	Cu
Contact Spring	-

Order information

Standard colour(s)	● green
(further colours on request, see page 5)	(Ral 6018)

No. of poles	Cat.-No.	Qty.p.pck.
2	10666.1	50
3	10667.1	50
4	10668.1	50
5	10669.1	50
6	10670.1	50
7	10671.1	50
8	10672.1	50
9	10673.1	50
10	10674.1	50
11	10675.1	50
12	10676.1	50
13	10677.1	50
14	10678.1	50
15	10679.1	50
16	10680.1	50
17	10681.1	50
18	10682.1	50
19	10683.1	50
20	10684.1	50
21	10685.1	50
22	10686.1	50
23	10687.1	50
24	10688.1	50

Accessories

Marking	Page 124 - 127
---------	----------------