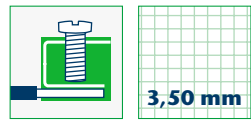
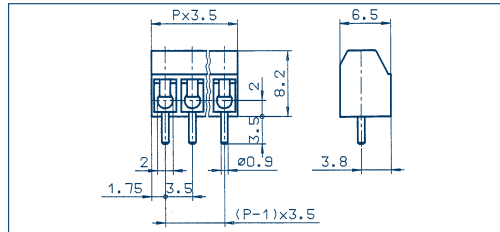
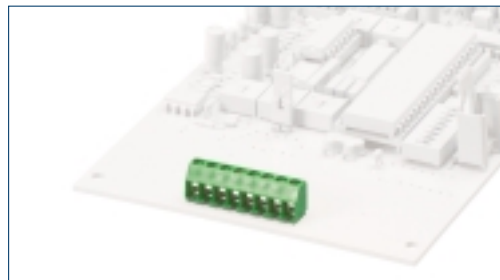


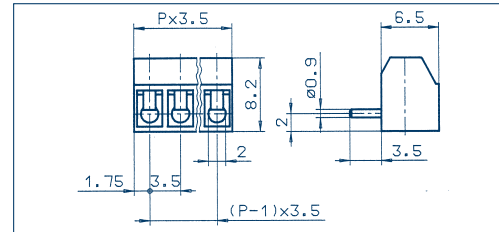
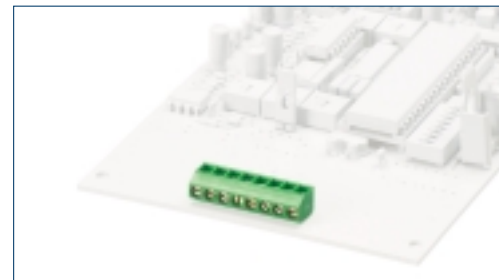
Terminals



PK 550/... /3,50-V vertical



PK 550/... /3,50-H horizontal



Drawings

Connection principle

Dimensions

Spacing mm	3,50
Stripped length mm	5,50
PCB hole diameter mm	1,20

Cross sections

single wire (solid) mm <sup>2</sup>	1,50
stranded wire (flexible) mm <sup>2</sup>	1,00
stranded wire (with ferrules) mm <sup>2</sup>	0,75

Output information

Rated voltage V	125 V	130 V
Rated current A	6 A	13,50 A (T60)
Cross section max. AWG/mm <sup>2</sup>	28-16	1,00
Test voltage	-	2,00 kV
Rated torque/Screw size	-	0,40 Nm/M2
Dirt level	-	-

Materials

Insulating material/Flammability class	PA 6.6 V0 / UL 94 V0
Temperature Range	-30°C / +105°C
Clamping part	CuZn
Clamping cage/Eccentric	-
Contact pin	-
Cage tension spring	-
Wire protection	stainless steel
Soldering lug	-
Contact Spring	-

Order information

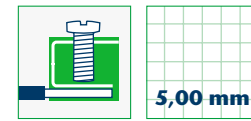
No. of poles	Cat.-No.	Qty.p.pck.	
	green	dark grey	
	(Ral 6018)	(Ral 7016)	

2	10247.1	10247.4	50
3	10248.1	10248.4	50
4	10249.1	10249.4	50
5	10250.1	10250.4	50
6	10251.1	10251.4	50
7	10252.1	10252.4	50
8	10253.1	10253.4	50
9	10254.1	10254.4	50
10	10255.1	10255.4	50
11	10256.1	10256.4	50
12	10257.1	10257.4	50
13	10258.1	10258.4	50
14	10259.1	10259.4	50
15	10260.1	10260.4	50
16	10261.1	10261.4	50

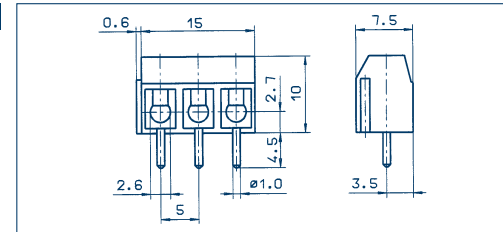
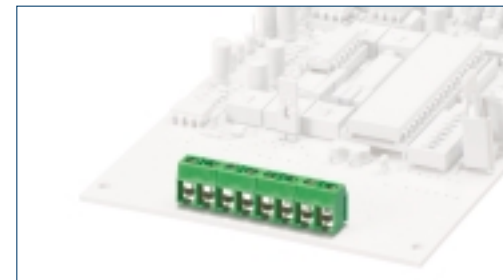
Accessories

Marking	Page 124 - 127
---------	----------------

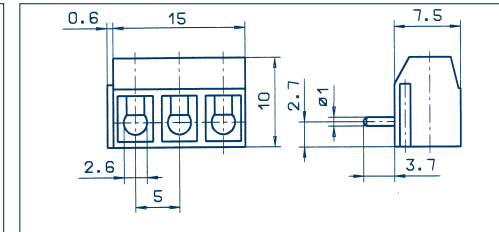
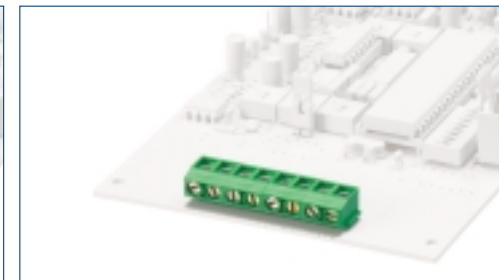
Terminals



PK 500/... /5,00-V vertical



PK 500/... /5,00-H horizontal



Drawings

Connection principle

Dimensions

Spacing mm	5,00
Stripped length mm	6,00
PCB hole diameter mm	1,30

Cross sections

single wire (solid) mm <sup>2</sup>	1,50
stranded wire (flexible) mm <sup>2</sup>	1,00
stranded wire (with ferrules) mm <sup>2</sup>	0,75

Output information

Rated voltage V	300 V	250 V
Rated current A	15 A	17,50 A (T60)
Cross section max. AWG/mm <sup>2</sup>	22-14	1,50
Test voltage	-	2,00 kV
Rated torque/Screw size	-	0,40 Nm/M2,6
Dirt level	-	-

Materials

Insulating material/Flammability class	PA 6.6 V0 / UL 94 V0
Temperature Range	-30°C / +105°C
Clamping part	CuZn
Clamping cage/Eccentric	-
Contact pin	-
Cage tension spring	-
Wire protection	stainless steel
Soldering lug	-
Contact Spring	-

Order information

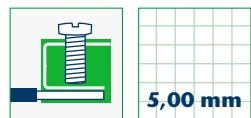
No. of poles	Cat.-No.	Qty.p.pck.	
	green	dark grey	
	(Ral 6018)	(Ral 7016)	

2	10143.1	10143.4	50
3	10144.1	10144.4	50
4	10145.1	10145.4	50
5	10146.1	10146.4	50
6	10147.1	10147.4	50
7	10148.1	10148.4	50
8	10149.1	10149.4	50
9	10150.1	10150.4	50
10	10151.1	10151.4	50
11	10152.1	10152.4	50
12	10153.1	10153.4	50
13	12493.1	12493.4	50
14	12494.1	12494.4	50
15	12495.1	12495.4	50
16	12496.1	12496.4	50
17	12497.1	12497.4	50
18	12498.1	12498.4	50
19	12499.1	12499.4	50
20	12500.1	12500.4	50
21	12501.1	12501.4	50
22	12502.1	12502.4	50
23	12503.1	12503.4	50
24	12504.1	12504.4	50

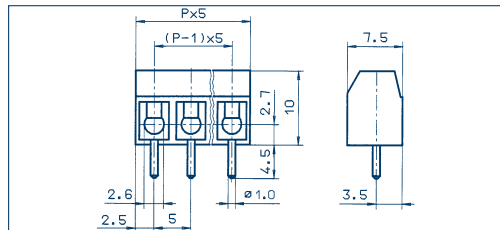
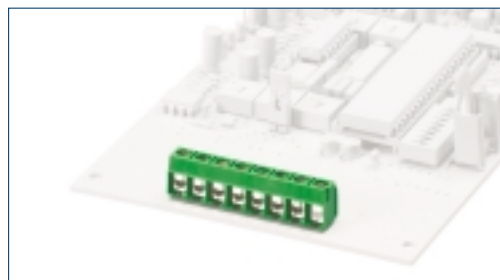
Accessories

Marking	Page 124 - 127
---------	----------------

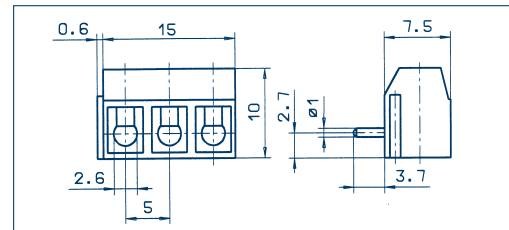
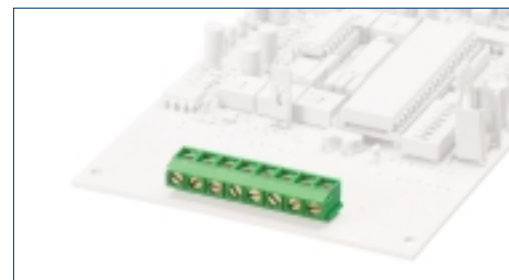
Terminals



PK 500/... /5,00-V-BL vertical



PK 500/... /5,00-H-BL horizontal



Drawings

Connection principle

Dimensions

Spacing mm	5,00
Stripped length mm	6,00
PCB hole diameter mm	1,30

Cross sections

single wire (solid) mm <sup>2</sup>	1,50
stranded wire (flexible) mm <sup>2</sup>	1,00
stranded wire (with ferrules) mm <sup>2</sup>	0,75

Output information

Rated voltage V	300 V
Rated current A	15 A
Cross section max. AWG/mm <sup>2</sup>	22-14
Test voltage	2,00 kV
Rated torque/Screw size	0,40 Nm/M2,6
Dirt level	-

Materials

Insulating material/Flammability class	PA 6.6 V0 / UL 94 V0
Temperature Range	-30°C / +105°C
Clamping part	CuZn
Clamping cage/Eccentric	-
Contact pin	-
Cage tension spring	-
Wire protection	stainless steel
Soldering lug	-
Contact Spring	-

Order information

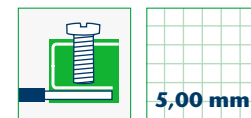
No. of poles	Cat.-No.	Qty.p.pck.	
	green	dark grey	
	(Ral 6018)	(Ral 7016)	

2	10231.1	10231.4	50
3	10232.1	10232.4	50
4	10233.1	10233.4	50
5	10234.1	10234.4	50
6	10235.1	10235.4	50
7	10236.1	10236.4	50
8	10237.1	10237.4	50
9	10238.1	10238.4	50
10	10239.1	10239.4	50
11	10240.1	10240.4	50
12	10241.1	10241.4	50

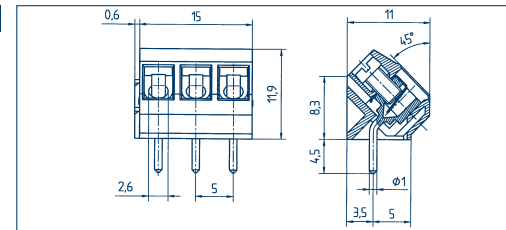
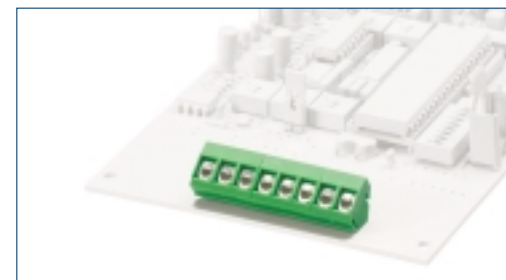
Accessories

Marking Page 124 - 127

Terminals



PK 590/... /5,00



Drawings

Connection principle

Dimensions

Spacing mm	5,00
Stripped length mm	6,00
PCB hole diameter mm	1,30

Cross sections

single wire (solid) mm <sup>2</sup>	1,50
stranded wire (flexible) mm <sup>2</sup>	1,50
stranded wire (with ferrules) mm <sup>2</sup>	0,75

Output information

Rated voltage V	300 V
Rated current A	15 A
Cross section max. AWG/mm <sup>2</sup>	22-14
Test voltage	2,00 kV
Rated torque/Screw size	0,40 Nm/M2,6
Dirt level	-

Materials

Insulating material/Flammability class	PA 6.6 V0 / UL 94 V0
Temperature Range	-30°C / +105°C
Clamping part	CuZn
Clamping cage/Eccentric	-
Contact pin	-
Cage tension spring	-
Wire protection	stainless steel
Soldering lug	-
Contact Spring	-

Order information

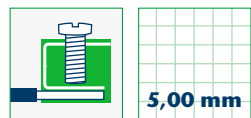
No. of poles	Cat.-No.	Qty.p.pck.
	green	
	(Ral 6018)	

2	12855.1	50
3	12856.1	50
4	12857.1	50
5	12858.1	50
6	12859.1	50
7	12860.1	50
8	12861.1	50
9	12862.1	50
10	12863.1	50
11	12864.1	50
12	12865.1	50
13	12866.1	50
14	12867.1	50
15	12868.1	50
16	12869.1	50
17	12870.1	50
18	12871.1	50
19	12872.1	50
20	12873.1	50
21	12874.1	50
22	12875.1	50
23	12876.1	50
24	12877.1	50

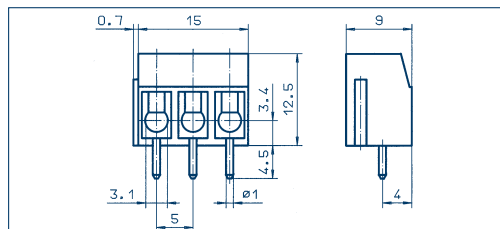
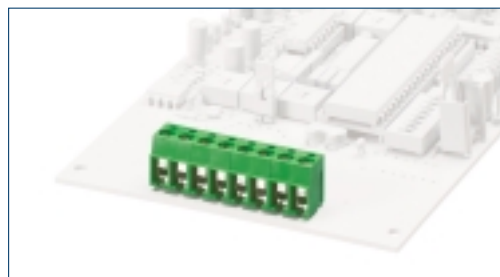
Accessories

Marking Page 124 - 127

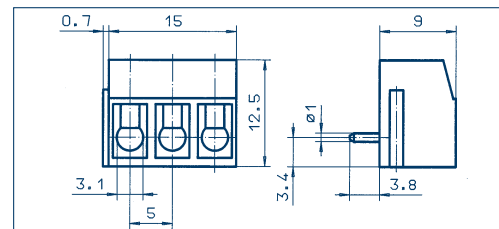
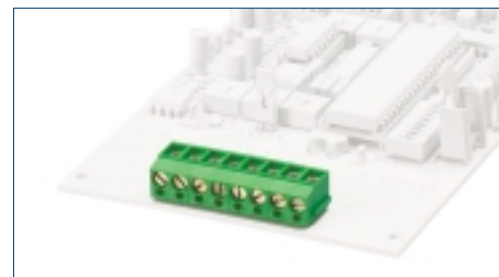
Terminals



PK 100/... /5,00-V vertical



PK 100/... /5,00-H horizontal



Drawings

Connection principle

Dimensions

Spacing mm	5,00
Stripped length mm	7,00
PCB hole diameter mm	1,30

Cross sections

single wire (solid) mm <sup>2</sup>	2,50
stranded wire (flexible) mm <sup>2</sup>	1,50
stranded wire (with ferrules) mm <sup>2</sup>	1,50

Output information

Rated voltage V	300 V	250 V
Rated current A	15 A	24 A (T60)
Cross section max. AWG/mm <sup>2</sup>	22-14	2,50
Test voltage	-	2,00 kV
Rated torque/Screw size	-	0,50 Nm/M3
Dirt level	-	-

Materials

Insulating material/Flammability class	PA 6.6 V0 / UL 94 V0
Temperature Range	-30°C / +105°C
Clamping part	CuZn
Clamping cage/Eccentric	-
Contact pin	-
Cage tension spring	-
Wire protection	stainless steel
Soldering lug	-
Contact Spring	-

Order information

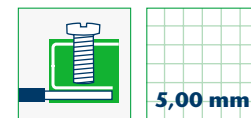
No. of poles	Cat.-No.	Qty.p.pck.	
	green	dark grey	
	(Ral 6018)	(Ral 7016)	

2	10001.1	10001.4	50
3	10002.1	10002.4	50
4	10003.1	10003.4	50
5	10004.1	10004.4	50
6	10005.1	10005.4	50
7	10006.1	10006.4	50
8	10007.1	10007.4	50
9	10008.1	10008.4	50
10	10009.1	10009.4	50
11	10010.1	10010.4	50
12	10011.1	10011.4	50
13	12385.1	12385.4	50
14	12386.1	12386.4	50
15	12387.1	12387.4	50
16	12388.1	12388.4	50
17	12389.1	12389.4	50
18	12390.1	12390.4	50
19	12391.1	12391.4	50
20	12392.1	12392.4	50
21	12393.1	12393.4	50
22	12394.1	12394.4	50
23	12395.1	12395.4	50
24	12396.1	12396.4	50

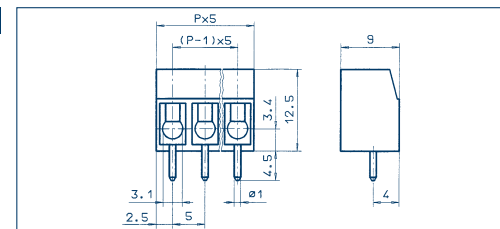
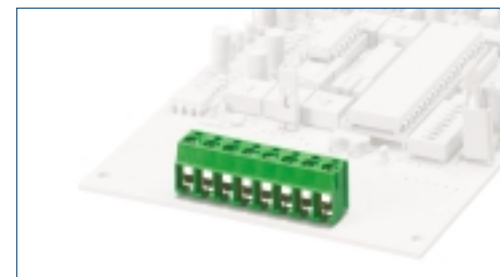
Accessories

Marking Page 124 - 127

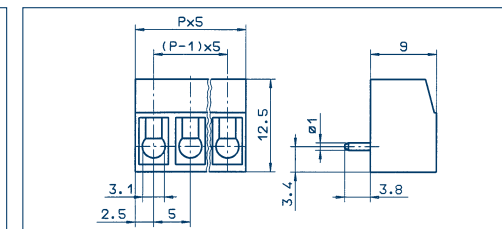
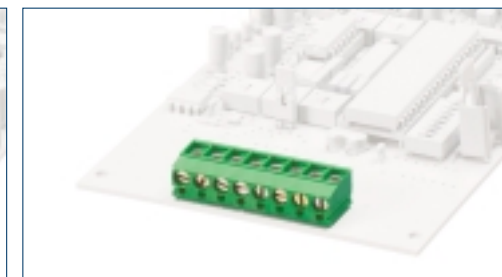
Terminals



PK 100/... /5,00-V-BL vertical



PK 100/... /5,00-H-BL horizontal



Drawings

Connection principle

Dimensions

Spacing mm	5,00
Stripped length mm	7,00
PCB hole diameter mm	1,30

Cross sections

single wire (solid) mm <sup>2</sup>	2,50
stranded wire (flexible) mm <sup>2</sup>	1,50
stranded wire (with ferrules) mm <sup>2</sup>	1,50

Output information

Rated voltage V	300 V	250 V
Rated current A	15 A	24 A (T60)
Cross section max. AWG/mm <sup>2</sup>	22-14	2,50
Test voltage	-	2,00 kV
Rated torque/Screw size	-	0,50 Nm/M3
Dirt level	-	-

Materials

Insulating material/Flammability class	PA 6.6 V0 / UL 94 V0
Temperature Range	-30°C / +105°C
Clamping part	CuZn
Clamping cage/Eccentric	-
Contact pin	-
Cage tension spring	-
Wire protection	stainless steel
Soldering lug	-
Contact Spring	-

Order information

No. of poles	Cat.-No.	Qty.p.pck.	
	green	dark grey	
	(Ral 6018)	(Ral 7016)	

2	10045.1	10045.4	50
3	10046.1	10046.4	50
4	10047.1	10047.4	50
5	10048.1	10048.4	50
6	10049.1	10049.4	50
7	10050.1	10050.4	50
8	10051.1	10051.4	50
9	10052.1	10052.4	50
10	10053.1	10053.4	50
11	10054.1	10054.4	50
12	10055.1	10055.4	50
13	12421.1	12421.4	50
14	12422.1	12422.4	50
15	12423.1	12423.4	50
16	12424.1	12424.4	50
17	12425.1	12425.4	50
18	12426.1	12426.4	50
19	12427.1	12427.4	50
20	12428.1	12428.4	50
21	12429.1	12429.4	50
22	12430.1	12430.4	50
23	12431.1	12431.4	50
24	12432.1	12432.4	50

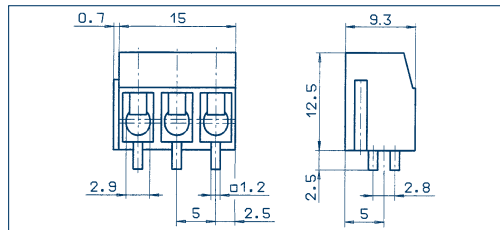
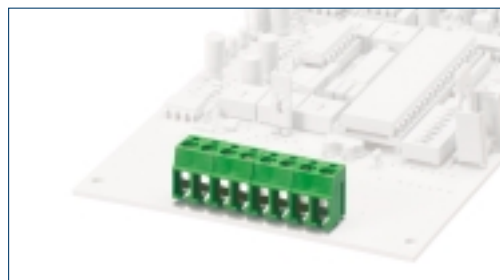
Accessories

Marking Page 124 - 127

Terminals



PK 104/... /5,00-V vertical



Drawings

Connection principle

Dimensions

Spacing mm	5,00
Stripped length mm	7,00
PCB hole diameter mm	2,00 x 2,80

Cross sections

single wire (solid) mm <sup>2</sup>	4,00
stranded wire (flexible) mm <sup>2</sup>	2,50
stranded wire (with ferrules) mm <sup>2</sup>	1,50

Output information

Rated voltage V	300 V	250 V
Rated current A	15 A	32 A (T60)
Cross section max. AWG/mm <sup>2</sup>	22-12	4,00
Test voltage	-	2,00 kV
Rated torque/Screw size	-	0,80 Nm/M3
Dirt level	-	-

Materials

Insulating material/Flammability class	PA 6.6 V0 / UL 94 V0
Temperature Range	-30°C / +105°C
Clamping part	CuZn
Clamping cage/Eccentric	-
Contact pin	-
Cage tension spring	-
Wire protection	stainless steel
Soldering lug	-
Contact Spring	-

Order information

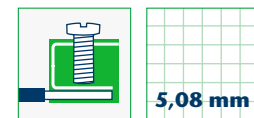
No. of poles	Cat.-No.	Qty.p.pck.	
	● green	● dark grey	

(further colours on request, see page 5)	green	dark grey	
	(Ral 6018)	(Ral 7016)	
2	10077.1	10077.4	50
3	10078.1	10078.4	50
4	10079.1	10079.4	50
5	10080.1	10080.4	50
6	10081.1	10081.4	50
7	10082.1	10082.4	50
8	10083.1	10083.4	50
9	10084.1	10084.4	50
10	10085.1	10085.4	50
11	10086.1	10086.4	50
12	10087.1	10087.4	50
13	12397.1	12397.4	50
14	12398.1	12398.4	50
15	12399.1	12399.4	50
16	12400.1	12400.4	50
17	12401.1	12401.4	50
18	12402.1	12402.4	50
19	12403.1	12403.4	50
20	12404.1	12404.4	50
21	12405.1	12405.4	50
22	12406.1	12406.4	50
23	12407.1	12407.4	50
24	12408.1	12408.4	50

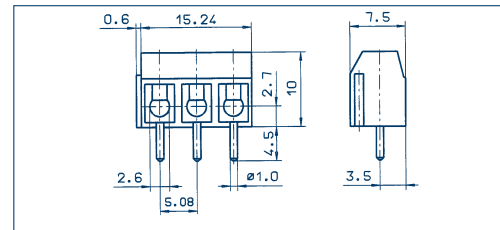
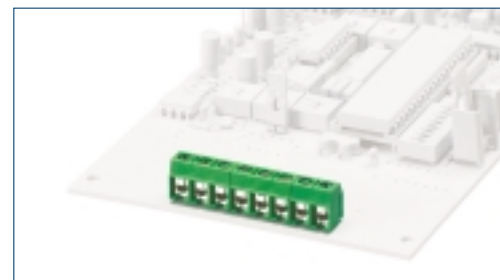
Accessories

Marking Page 124 - 127

Terminals



PK 500/... /5,08-V vertical



Drawings

Connection principle

Dimensions

Spacing mm	5,08
Stripped length mm	6,00
PCB hole diameter mm	1,30

Cross sections

single wire (solid) mm <sup>2</sup>	1,50
stranded wire (flexible) mm <sup>2</sup>	1,00
stranded wire (with ferrules) mm <sup>2</sup>	0,75

Output information

Rated voltage V	300 V	250 V
Rated current A	15 A	17,50 A (T60)
Cross section max. AWG/mm <sup>2</sup>	22-14	1,50
Test voltage	-	2,00 kV
Rated torque/Screw size	-	0,40 Nm/M2,6
Dirt level	-	-

Materials

Insulating material/Flammability class	PA 6.6 V0 / UL 94 V0
Temperature Range	-30°C / +105°C
Clamping part	CuZn
Clamping cage/Eccentric	-
Contact pin	-
Cage tension spring	-
Wire protection	stainless steel
Soldering lug	-
Contact Spring	-

Order information

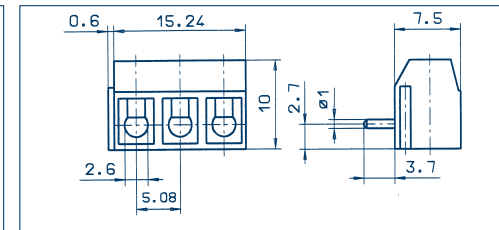
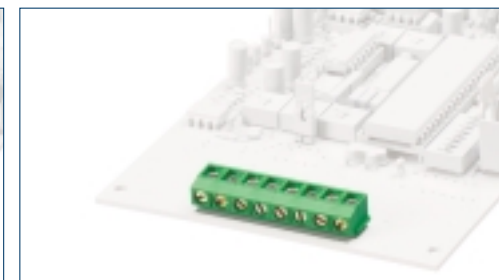
No. of poles	Cat.-No.	Qty.p.pck.	
	● green	● dark grey	

(further colours on request, see page 5)	green	dark grey	
	(Ral 6018)	(Ral 7016)	
2	10154.1	10154.4	50
3	10155.1	10155.4	50
4	10156.1	10156.4	50
5	10157.1	10157.4	50
6	10158.1	10158.4	50
7	10159.1	10159.4	50
8	10160.1	10160.4	50
9	10161.1	10161.4	50
10	10162.1	10162.4	50
11	10163.1	10163.4	50
12	10164.1	10164.4	50
13	12505.1	12505.4	50
14	12506.1	12506.4	50
15	12507.1	12507.4	50
16	12508.1	12508.4	50
17	12509.1	12509.4	50
18	12510.1	12510.4	50
19	12511.1	12511.4	50
20	12512.1	12512.4	50
21	12513.1	12513.4	50
22	12514.1	12514.4	50
23	12515.1	12515.4	50
24	12516.1	12516.4	50

Accessories

Marking Page 124 - 127

PK 500/... /5,08-H horizontal



Wire-protection

Dimensions

Spacing mm	5,08
Stripped length mm	5,00
PCB hole diameter mm	1,30

Cross sections

single wire (solid) mm <sup>2</sup>	1,50
stranded wire (flexible) mm <sup>2</sup>	1,00
stranded wire (with ferrules) mm <sup>2</sup>	0,75

Output information

Rated voltage V	300 V	250 V
Rated current A	15 A	17,50 A (T60)
Cross section max. AWG/mm <sup>2</sup>	22-14	1,50
Test voltage	-	2,00 kV
Rated torque/Screw size	-	0,40 Nm/M2,6
Dirt level	-	-

Materials

Insulating material/Flammability class	PA 6.6 V0 / UL 94 V0
Temperature Range	-30°C / +105°C
Clamping part	CuZn
Clamping cage/Eccentric	-
Contact pin	-
Cage tension spring	-
Wire protection	stainless steel
Soldering lug	-
Contact Spring	-

Order information

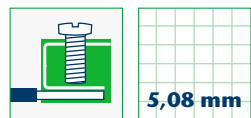
No. of poles	Cat.-No.	Qty.p.pck.	
	● green	● dark grey	

(further colours on request, see page 5)	green	dark grey	
	(Ral 6018)	(Ral 7016)	
2	10176.1	10176.4	50
3	10177.1	10177.4	50
4	10178.1	10178.4	50
5	10179.1	10179.4	50
6	10180.1	10180.4	50
7	10181.1	10181.4	50
8	10182.1	10182.4	50
9	10183.1	10183.4	50
10	10184.1	10184.4	50
11	10185.1	10185.4	50
12	10186.1	10186.4	50
13	10529.1	10529.4	50
14	10530.1	10530.4	50
15	10531.1	10531.4	50
16	10532.1	10532.4	50
17	10533.1	10533.4	50
18	10534.1	10534.4	50
19	10535.1	10535.4	50
20	10536.1	10536.4	50
21	10537.1	10537.4	50
22	10538.1	10538.4	50
23	10539.1	10539.4	50
24	10540.1	10540.4	50

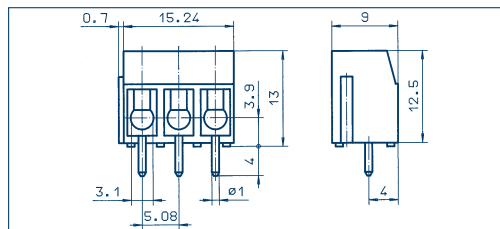
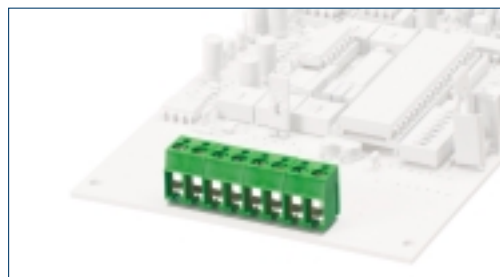
Accessories

Marking Page 124 - 127

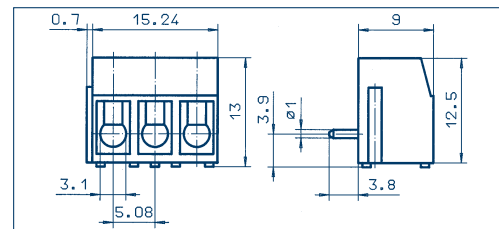
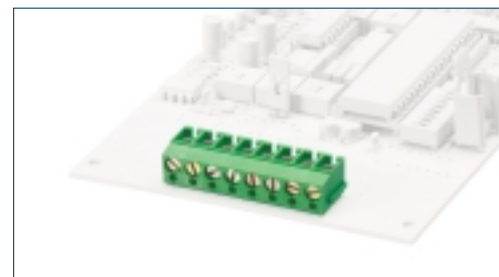
Terminals



PK 120/... /5,08-V vertical



PK 120/... /5,08-H horizontal



Drawings

Connection principle

Dimensions

Spacing mm	5,08
Stripped length mm	7,00
PCB hole diameter mm	1,30

Cross sections

single wire (solid) mm <sup>2</sup>	2,50
stranded wire (flexible) mm <sup>2</sup>	1,50
stranded wire (with ferrules) mm <sup>2</sup>	1,50

Output information

Rated voltage V	300 V	250 V
Rated current A	15 A	24 A (T60)
Cross section max. AWG/mm <sup>2</sup>	22-14	2,50
Test voltage	-	2,00 kV
Rated torque/Screw size	-	0,50 Nm/M3
Dirt level	-	-

Materials

Insulating material/Flammability class	PA 6.6 V0 / UL 94 V0
Temperature Range	-30°C / +105°C
Clamping part	CuZn
Clamping cage/Eccentric	-
Contact pin	-
Cage tension spring	-
Wire protection	stainless steel
Soldering lug	-
Contact Spring	-

Order information

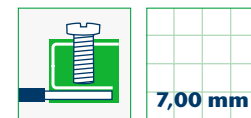
No. of poles	Cat.-No.	Qty.p.pck.
	green	dark grey

(further colours on request, see page 5)			
2	10121.1	10121.4	50
3	10122.1	10122.4	50
4	10123.1	10123.4	50
5	10124.1	10124.4	50
6	10125.1	10125.4	50
7	10126.1	10126.4	50
8	10127.1	10127.4	50
9	10128.1	10128.4	50
10	10129.1	10129.4	50
11	10130.1	10130.4	50
12	10131.1	10131.4	50
13	12409.1	12409.4	50
14	12410.1	12410.4	50
15	12411.1	12411.4	50
16	12412.1	12412.4	50
17	12413.1	12413.4	50
18	12414.1	12414.4	50
19	12415.1	12415.4	50
20	12416.1	12416.4	50
21	12417.1	12417.4	50
22	12418.1	12418.4	50
23	12419.1	12419.4	50
24	12420.1	12420.4	50

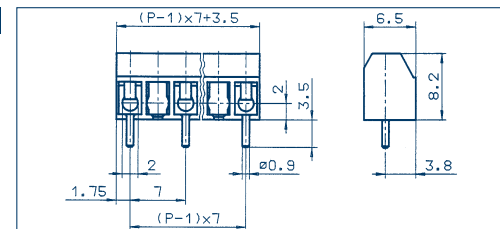
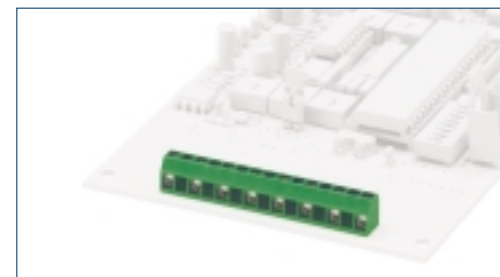
Accessories

Marking Page 124 - 127

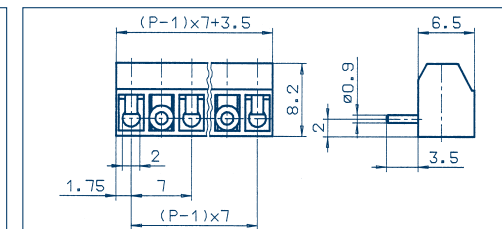
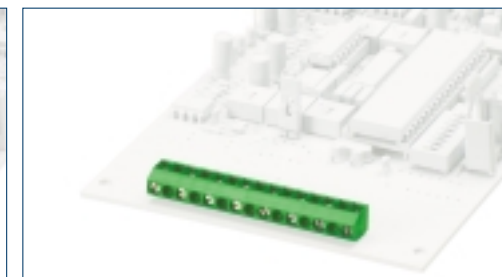
Terminals



PK 550/... /7,00-V vertical



PK 550/... /7,00-H horizontal



Drawings

Connection principle

Dimensions

Spacing mm	7,00
Stripped length mm	5,50
PCB hole diameter mm	1,20

Cross sections

single wire (solid) mm <sup>2</sup>	1,50
stranded wire (flexible) mm <sup>2</sup>	1,00
stranded wire (with ferrules) mm <sup>2</sup>	0,75

Output information

Rated voltage V	300 V	450 V
Rated current A	6 A	13,50 A (T60)
Cross section max. AWG/mm <sup>2</sup>	28-16	1,00
Test voltage	-	3,00 kV
Rated torque/Screw size	-	0,40 Nm/M2
Dirt level	-	-

Materials

Insulating material/Flammability class	PA 6.6 V0 / UL 94 V0
Temperature Range	-30°C / +105°C
Clamping part	CuZn
Clamping cage/Eccentric	-
Contact pin	-
Cage tension spring	-
Wire protection	stainless steel
Soldering lug	-
Contact Spring	-

Order information

No. of poles	Cat.-No.	Qty.p.pck.
	green	dark grey

(further colours on request, see page 5)			
2	10277.1	10277.4	50
3	10278.1	10278.4	50
4	10279.1	10279.4	50
5	10280.1	10280.4	50
6	10281.1	10281.4	50
7	10282.1	10282.4	50
8	10283.1	10283.4	50

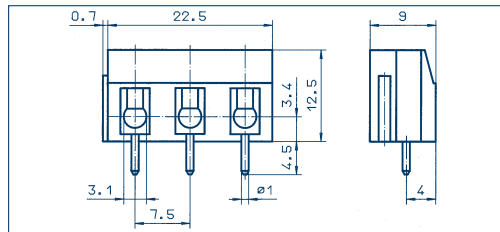
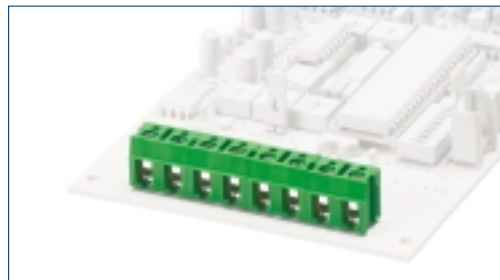
Accessories

Marking Page 124 - 127

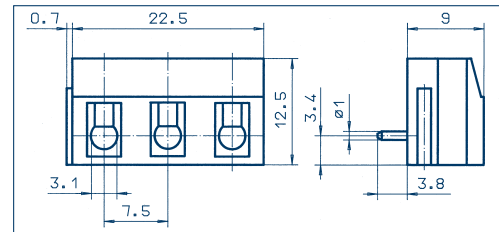
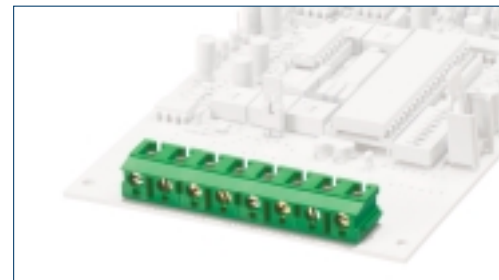
Terminals



PK 110/... /7,50-V vertical



PK 110/... /7,50-H horizontal



Drawings

Connection principle

Dimensions

Spacing mm	7,50
Stripped length mm	7,00
PCB hole diameter mm	1,30
<b>Cross sections</b>	
single wire (solid) mm <sup>2</sup>	2,50
stranded wire (flexible) mm <sup>2</sup>	1,50
stranded wire (with ferrules) mm <sup>2</sup>	1,50

Output information

Rated voltage V	300 V	500 V
Rated current A	20 A	24 A (T60)
Cross section max. AWG/mm <sup>2</sup>	22-14	2,50
Test voltage	-	3,00 kV
Rated torque/Screw size	-	0,50 Nm/M3
Dirt level	-	-

Materials

Insulating material/Flammability class	PA 6.6 V0 / UL 94 V0
Temperature Range	-30°C / +105°C
Clamping part	CuZn
Clamping cage/Eccentric	-
Contact pin	-
Cage tension spring	-
Wire protection	stainless steel
Soldering lug	-
Contact Spring	-

Order information

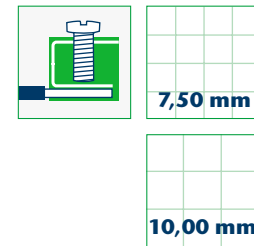
No. of poles	Cat.-No.	Qty.p.pck.
Standard colour(s)		
(further colours on request, see page 5)		

	● green (Ral 6018)	● dark grey (Ral 7016)	
2	10099.1	10099.4	50
3	10100.1	10100.4	50
4	10101.1	10101.4	50
5	10102.1	10102.4	50
6	10103.1	10103.4	50
7	10104.1	10104.4	50
8	10105.1	10105.4	50
9	10106.1	10106.4	50
10	10107.1	10107.4	50
11	10108.1	10108.4	50
12	10109.1	10109.4	50
13	12457.1	12457.4	50
14	12458.1	12458.4	50
15	12459.1	12459.4	50
16	12460.1	12460.4	50
17	12461.1	12461.4	50
18	12462.1	12462.4	50
19	12463.1	12463.4	50
20	12464.1	12464.4	50
21	12465.1	12465.4	50
22	12466.1	12466.4	50
23	12467.1	12467.4	50
24	12468.1	12468.4	50

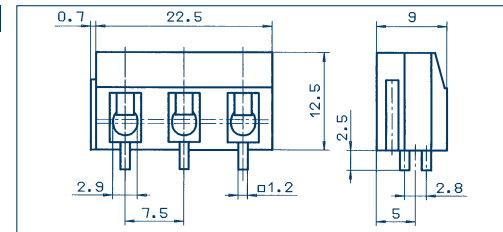
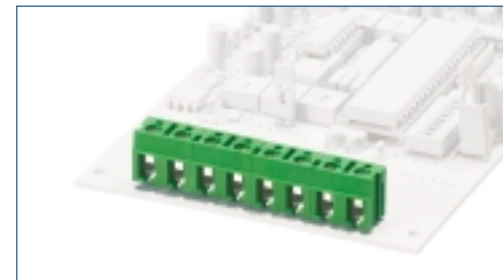
Accessories

Marking Page 124 - 127

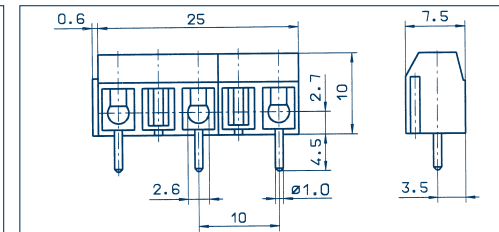
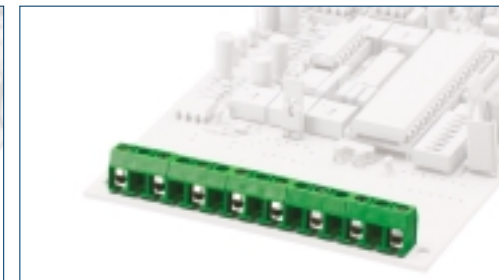
Terminals



PK 114/... /7,50-V vertical



PK 500/... /10,00-V vertical



Drawings

Connection principle

Dimensions

Spacing mm	7,50
Stripped length mm	7,00
PCB hole diameter mm	2,00 x 2,80
<b>Cross sections</b>	
single wire (solid) mm <sup>2</sup>	4,00
stranded wire (flexible) mm <sup>2</sup>	2,50
stranded wire (with ferrules) mm <sup>2</sup>	1,50

Output information

Rated voltage V	300 V	500 V
Rated current A	15 A	32 A (T60)
Cross section max. AWG/mm <sup>2</sup>	22-12	4,00
Test voltage	-	3,00 kV
Rated torque/Screw size	-	0,80 Nm/M3
Dirt level	-	-

Materials

Insulating material/Flammability class	PA 6.6 V0 / UL 94 V0
Temperature Range	-30°C / +105°C
Clamping part	CuZn
Clamping cage/Eccentric	-
Contact pin	-
Cage tension spring	-
Wire protection	stainless steel
Soldering lug	-
Contact Spring	-

Order information

No. of poles	Cat.-No.	Qty.p.pck.
Standard colour(s)		
(further colours on request, see page 5)		

	● green (Ral 6018)	● dark grey (Ral 7016)	
2	10088.1	10088.4	50
3	10089.1	10089.4	50
4	10090.1	10090.4	50
5	10091.1	10091.4	50
6	10092.1	10092.4	50
7	10093.1	10093.4	50
8	10094.1	10094.4	50
9	10095.1	10095.4	50
10	10096.1	10096.4	50
11	10097.1	10097.4	50
12	10098.1	10098.4	50
13	12445.1	12445.4	50
14	12446.1	12446.4	50
15	12447.1	12447.4	50
16	12448.1	12448.4	50
17	12449.1	12449.4	50
18	12450.1	12450.4	50
19	12451.1	12451.4	50
20	12452.1	12452.4	50
21	12453.1	12453.4	50
22	12454.1	12454.4	50
23	12455.1	12455.4	50
24	12456.1	12456.4	50

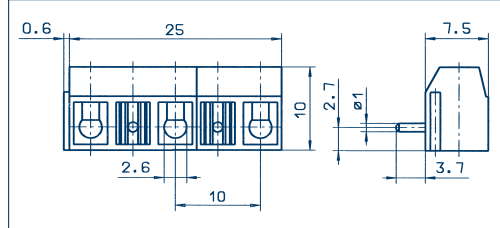
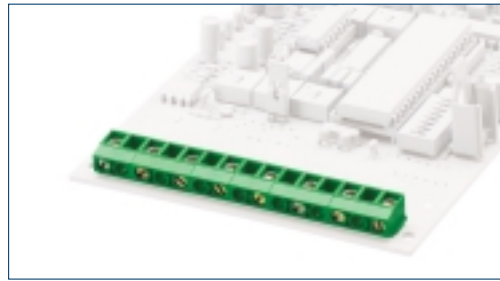
Accessories

Marking Page 124 - 127

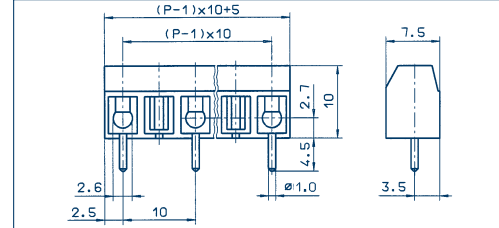
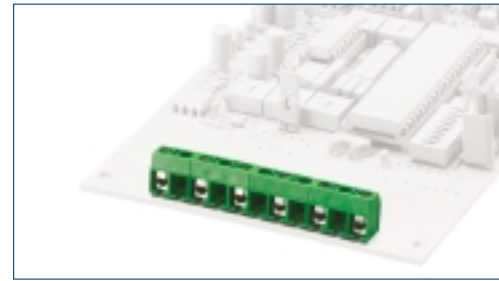
Terminals



PK 500/... /10,00-H vertical



PK 500/... /10,00-V-BL vertical



Drawings

Connection principle

Dimensions

Spacing mm	10,00
Stripped length mm	5,00
PCB hole diameter mm	1,30

Cross sections

single wire (solid) mm <sup>2</sup>	1,50
stranded wire (flexible) mm <sup>2</sup>	1,00
stranded wire (with ferrules) mm <sup>2</sup>	0,75

Output information

Rated voltage V	300 V	750 V
Rated current A	15 A	17,50 A (T60)
Cross section max. AWG/mm <sup>2</sup>	22-14	1,50
Test voltage	-	3,50 kV
Rated torque/Screw size	-	0,40 Nm/M2,6
Dirt level	-	-

Materials

Insulating material/Flammability class	PA 6.6 V0 / UL 94 V0
Temperature Range	-30°C / +105°C
Clamping part	CuZn
Clamping cage/Eccentric	-
Contact pin	-
Cage tension spring	-
Wire protection	stainless steel
Soldering lug	-
Contact Spring	-

Order information

No. of poles	Cat.-No.	Qty.p.pck.
	green	dark grey
	(Ral 6018)	(Ral 7016)

2	10209.1	10209.4	50
3	10210.1	10210.4	50
4	10211.1	10211.4	50
5	10212.1	10212.4	50
6	10213.1	10213.4	50
7	10214.1	10214.4	50
8	10215.1	10215.4	50
9	10216.1	10216.4	50
10	10217.1	10217.4	50
11	10218.1	10218.4	50
12	10219.1	10219.4	50
13	13485.1	13485.4	50
14	13486.1	13486.4	50
15	13487.1	13487.4	50
16	13488.1	13488.4	50
17	13489.1	13489.4	50
18	13490.1	13490.4	50
19	13491.1	13491.4	50
20	13492.1	13492.4	50
21	13493.1	13493.4	50
22	13494.1	13494.4	50
23	13495.1	13495.4	50
24	13496.1	13496.4	50

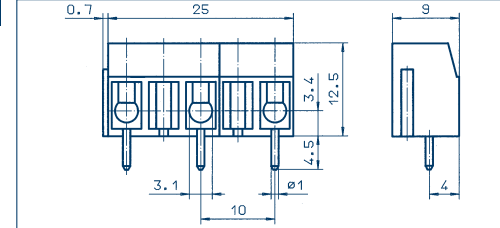
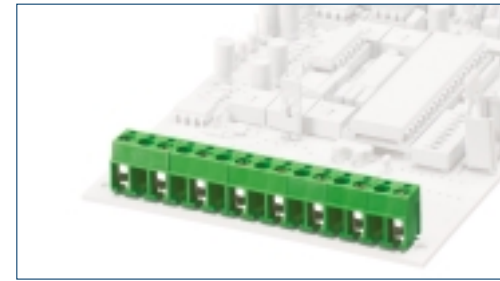
Accessories

Marking Page 124 - 127

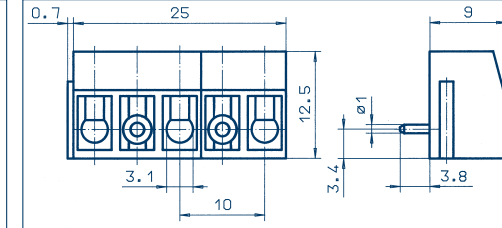
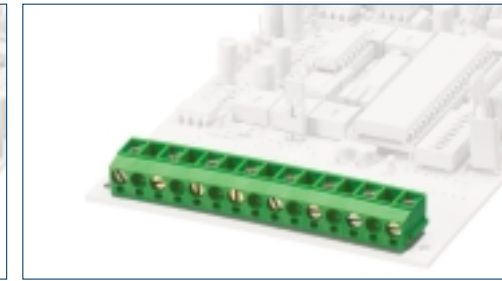
Terminals



PK 100/... /10,00-V vertical



PK 100/... /10,00-H horizontal



Drawings

Connection principle

Dimensions

Spacing mm	10,00
Stripped length mm	7,00
PCB hole diameter mm	1,30

Cross sections

single wire (solid) mm <sup>2</sup>	2,50
stranded wire (flexible) mm <sup>2</sup>	1,50
stranded wire (with ferrules) mm <sup>2</sup>	1,50

Output information

Rated voltage V	300 V	750 V
Rated current A	15 A	24 A (T60)
Cross section max. AWG/mm <sup>2</sup>	22-14	2,50
Test voltage	-	3,00 kV
Rated torque/Screw size	-	0,50 Nm/M3
Dirt level	-	-

Materials

Insulating material/Flammability class	PA 6.6 V0 / UL 94 V0
Temperature Range	-30°C / +105°C
Clamping part	CuZn
Clamping cage/Eccentric	-
Contact pin	-
Cage tension spring	-
Wire protection	stainless steel
Soldering lug	-
Contact Spring	-

Order information

No. of poles	Cat.-No.	Qty.p.pck.
	green	dark grey
	(Ral 6018)	(Ral 7016)

2	10023.1	10023.4	50
3	10024.1	10024.4	50
4	10025.1	10025.4	50
5	10026.1	10026.4	50
6	10027.1	10027.4	50
7	10028.1	10028.4	50
8	10029.1	10029.4	50
9	10030.1	10030.4	50
10	10031.1	10031.4	50
11	10032.1	10032.4	50
12	10033.1	10033.4	50
13	13497.1	13497.4	50
14	13498.1	13498.4	50
15	13499.1	13499.4	50
16	13500.1	13500.4	50
17	13501.1	13501.4	50
18	13502.1	13502.4	50
19	13503.1	13503.4	50
20	13504.1	13504.4	50
21	13505.1	13505.4	50
22	13506.1	13506.4	50
23	13507.1	13507.4	50
24	13508.1	13508.4	50

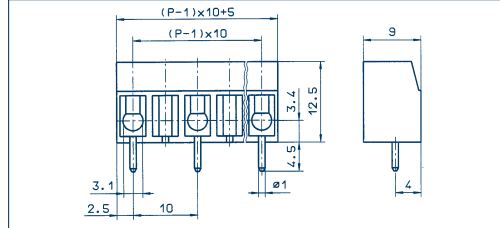
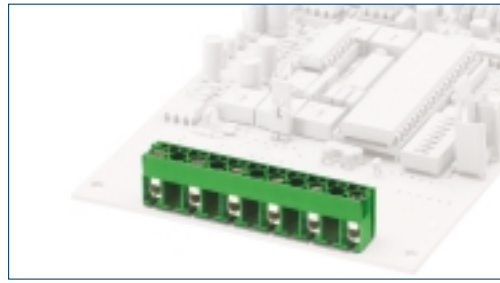
Accessories

Marking Page 124 - 127

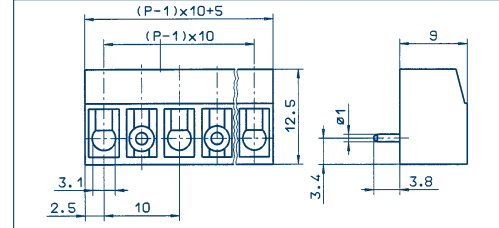
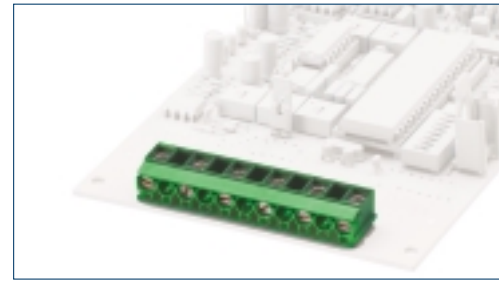
Terminals



PK 100/... /10,00-V-BL vertical



PK 100/... /10,00-H-BL horizontal



Drawings

Connection principle

Dimensions

Spacing mm	10,00
Stripped length mm	7,00
PCB hole diameter mm	1,30

Cross sections

single wire (solid) mm <sup>2</sup>	2,50
stranded wire (flexible) mm <sup>2</sup>	1,50
stranded wire (with ferrules) mm <sup>2</sup>	1,50

Output information

Rated voltage V	300 V
Rated current A	15 A
Cross section max. AWG/mm <sup>2</sup>	22-14
Test voltage	3,00 kV
Rated torque/Screw size	0,50 Nm/M3
Dirt level	-

Materials

Insulating material/Flammability class	PA 6.6 V0 / UL 94 V0
Temperature Range	-30°C / +105°C
Clamping part	CuZn
Clamping cage/Eccentric	-
Contact pin	-
Cage tension spring	-
Wire protection	stainless steel
Soldering lug	-
Contact Spring	-

Order information

No. of poles	Cat.-No.	Qty.p.pck.	
	green	dark grey	
	(Ral 6018)	(Ral 7016)	

2	10067.1	10067.4	50
3	10068.1	10068.4	50
4	10069.1	10069.4	50
5	10070.1	10070.4	50
6	10071.1	10071.4	50

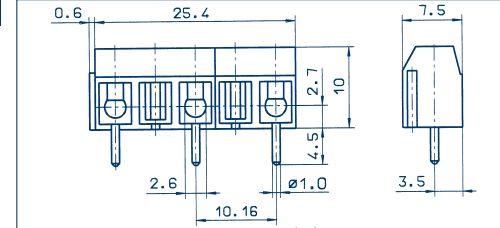
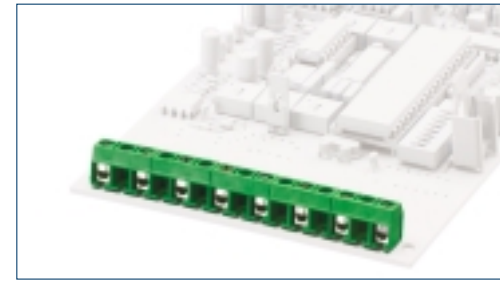
Accessories

Marking	Page 124 - 127
---------	----------------

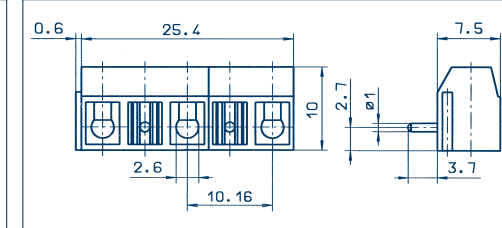
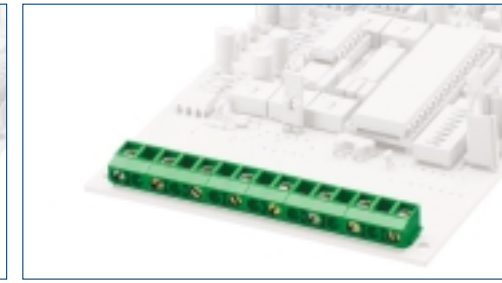
Terminals



PK 500/... /10,16-V vertical



PK 500/... /10,16-H horizontal



Drawings

Connection principle

Dimensions

Spacing mm	10,16
Stripped length mm	6,00
PCB hole diameter mm	1,30

Cross sections

single wire (solid) mm <sup>2</sup>	1,50
stranded wire (flexible) mm <sup>2</sup>	1,00
stranded wire (with ferrules) mm <sup>2</sup>	0,75

Output information

Rated voltage V	300 V
Rated current A	15 A
Cross section max. AWG/mm <sup>2</sup>	22-14
Test voltage	3,50 kV
Rated torque/Screw size	0,40 Nm/M2,6
Dirt level	-

Materials

Insulating material/Flammability class	PA 6.6 V0 / UL 94 V0
Temperature Range	-30°C / +105°C
Clamping part	CuZn
Clamping cage/Eccentric	-
Contact pin	-
Cage tension spring	-
Wire protection	stainless steel
Soldering lug	-
Contact Spring	-

Order information

No. of poles	Cat.-No.	Qty.p.pck.	
	green	dark grey	
	(Ral 6018)	(Ral 7016)	

2	10198.1	10198.4	50
3	10199.1	10199.4	50
4	10200.1	10200.4	50
5	10201.1	10201.4	50
6	10202.1	10202.4	50
7	10203.1	10203.4	50
8	10204.1	10204.4	50
9	10205.1	10205.4	50
10	10206.1	10206.4	50
11	10207.1	10207.4	50
12	10208.1	10208.4	50
13	13521.1	13521.4	50
14	13522.1	13522.4	50
15	13523.1	13523.4	50
16	13524.1	13524.4	50
17	13525.1	13525.4	50
18	13526.1	13526.4	50
19	13527.1	13527.4	50
20	13528.1	13528.4	50
21	13529.1	13529.4	50
22	13530.1	13530.4	50
23	13531.1	13531.4	50
24	13532.1	13532.4	50

Accessories

Marking	Page 124 - 127
---------	----------------