

Plug-in connection system PK-TS

CONTA-CON suitable for rail mounting

The plug-in type connection system **PK-TS** was designed to meet the ever increasing requirements in regards to both modularity and flexibility in switch cabinet and machinery production.

This system serves to facilitate to connect separately wired control board sections for integration into the allround installation. In this case, the wire between two control board sections is embedded in the **PK-TS** basic element of one of the sections whereas in the second section the according wires are embedded in the **PKB/PBT** counter section.

The **PK-TS** basic elements are mounted to the rail with catch feet, which are designed for individual assembly to the TS15, TS32 or TS35 DIN-mounting rails by means of a rail mount TS15/35 or TS32/35.

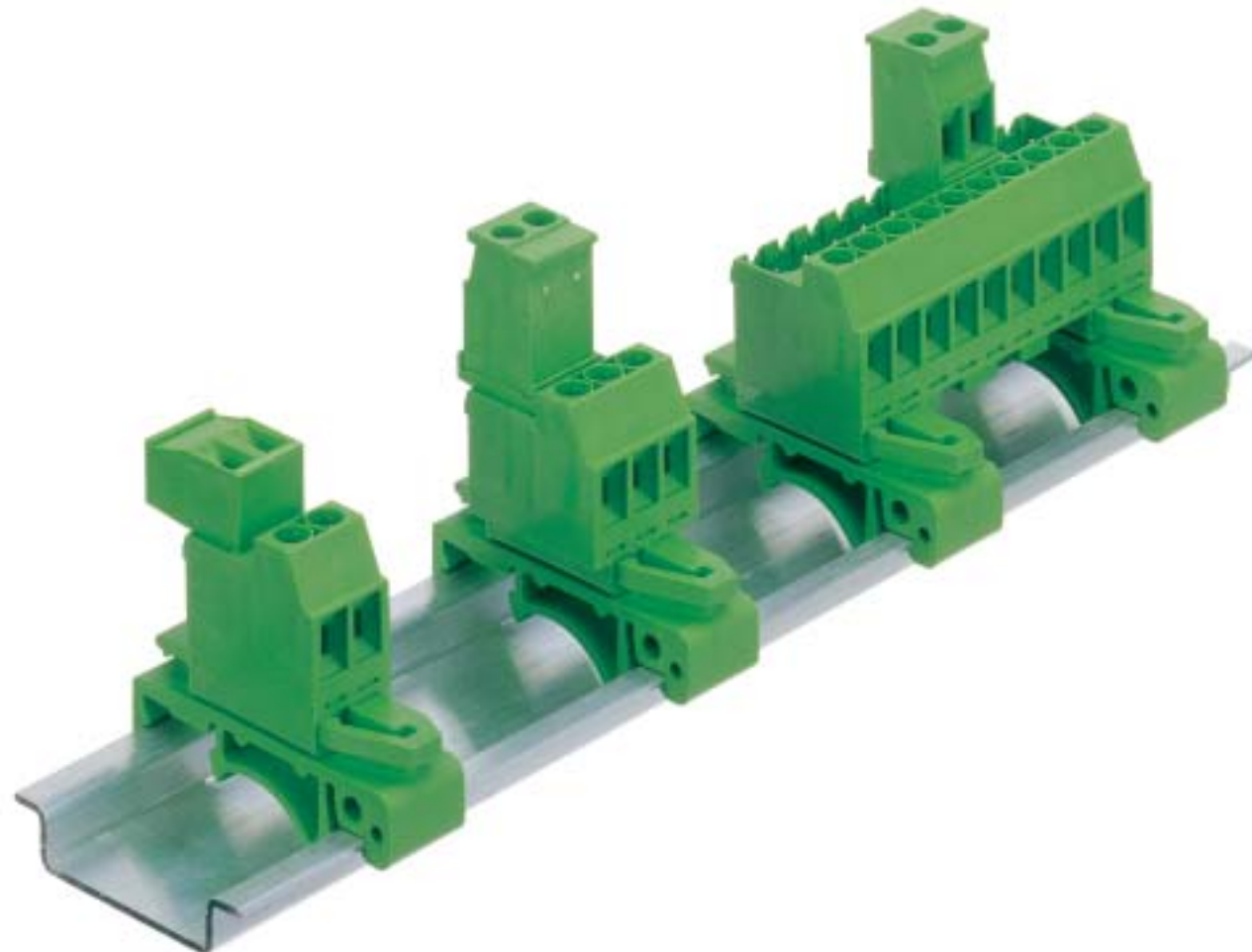
This permits both sections to be easily connected after installation of the switch cabinets. The type of connection technology (strain-relief-clamp or eccentric) is determined by the type of the plug-in connection element **PKB/PBT**.

The 2-24 pole **PK-TS** elements are also available with screwed flange. The **PK-TS** basic elements can be screwed to the corresponding plug-in connection element and are thus secured against unintentional loosening.

According to the type of the **PK-TS** and **PKB/ PBT** combinations, different connecting directions are possible (see RH).

When using several **PK-TS** and in order to prevent same from being incorrectly plugged in a control board section, **PKB/PBT** with their approved **CONTA-CON** coding system can be coded without loss of poles (cf. pages 122-123 for further details).

With respect to the wide range of marking possibilities please see pages 124 to 127 of this catalogue.



Plug-in connection system PK-TS

Connection Examples

PK-TS in combination within PKB 950

- . Entry fittings **PK-TS**: horizontally, from the right
- . Entry fittings **PKB 950**: vertically, from above



PK-TS in combination within PKB 1100

- . Entry fittings **PK-TS**: horizontally, from the right
- . Entry fittings **PKB 1100**: horizontally, from the left



PK-TS in combination within PKB 1110

- . Entry fittings **PK-TS**: horizontally, from the right
- . Entry fittings **PKB 1110**: horizontally, from the right



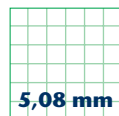
PK-TS in combination within PBT 1200

- . Entry fittings **PK-TS**: horizontally, from the right
- . Entry fittings **PBT 1200**: vertically, from above, screwed connection also vertically, from above.

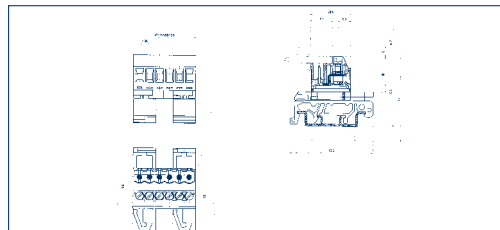


CONTA-CON

Plug-in connection system PK-TS



PK-TS/... /5,08/15 TS15/TS35



Drawings

Dimensions

Spacing mm	5,08
Stripped length mm	6,00
PCB hole diameter mm	-
Dimensions (L x B x H)	
TS15	(Pole x 5,08 + 6,6 mm) x 20,6 x 35,5 mm
TS32	-
TS35	(Pole x 5,08 + 6,6 mm) x 20,6 x 35,5 mm

Cross sections

single wire (solid) mm ²	2,50
stranded wire (flexible) mm ²	2,50
stranded wire (with ferrules) mm ²	2,50

Output information

Rated voltage V	300 V	250 V
Rated current A	15 A	12 A (T60)
Cross section max. AWG/mm ²	28-12	2,50
Rating impulse voltage	-	4,00 kV
Rated torque/Screw size	-	0,5 Nm/M3
Dirt level	-	3

Materials

Insulating material/Flammability class	PA 6.6 V0 / UL 94 V0
Temperature Range	-30°C / +105°C
Clamping part	CuZn
Clamping cage/Eccentric	-
Contact pin	Cu
Cage tension spring	-
Wire protection	-

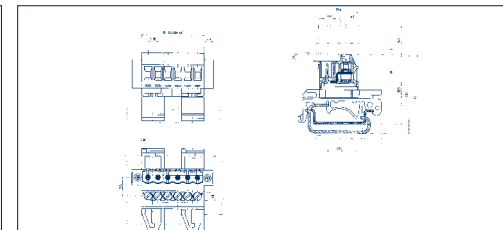
Order information

No. of poles	Cat.-No.	Qty.p.pck.
	●	
	green	
	(Ral 6018)	
2	13175.1	50
3	13176.1	50
4	13177.1	50
5	13178.1	50
6	13179.1	50
7	13180.1	40
8	13181.1	35
9	13182.1	30
10	13183.1	20
11	13184.1	20
12	13185.1	20
13	13186.1	20
14	13187.1	20
15	13188.1	15
16	13189.1	15
17	13190.1	15
18	13191.1	15
19	13192.1	15
20	13193.1	10
21	13194.1	10
22	13195.1	10
23	13196.1	10
24	13197.1	10

Accessories

Marking	Page 124 - 127
Coding	Page 122 - 123

PK-TS/... /5,08 TS32/TS35



Spacing mm	5,08
Stripped length mm	6,00
PCB hole diameter mm	-
Dimensions (L x B x H)	
TS15	-
TS32	(Pole x 5,08 + 6,6 mm) x 20,6 x 40,5 mm
TS35	(Pole x 5,08 + 6,6 mm) x 20,6 x 33,5 mm

single wire (solid) mm ²	2,50
stranded wire (flexible) mm ²	2,50
stranded wire (with ferrules) mm ²	2,50

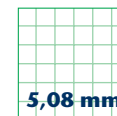
Rated voltage V	300 V	250 V
Rated current A	15 A	12 A (T60)
Cross section max. AWG/mm ²	28-12	2,50
Rating impulse voltage	-	4,00 kV
Rated torque/Screw size	-	0,5 Nm/M3
Dirt level	-	3

Insulating material/Flammability class	PA 6.6 V0 / UL 94 V0
Temperature Range	-30°C / +105°C
Clamping part	CuZn
Clamping cage/Eccentric	-
Contact pin	Cu
Cage tension spring	-
Wire protection	-

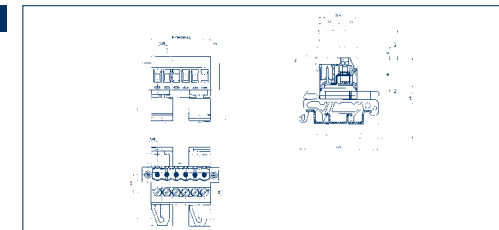
No. of poles	Cat.-No.	Qty.p.pck.
	●	
	green	
	(Ral 6018)	
2	12319.1	50
3	12320.1	50
4	12321.1	50
5	12322.1	50
6	12323.1	50
7	12324.1	40
8	12325.1	35
9	12326.1	30
10	12327.1	20
11	12328.1	20
12	12329.1	20
13	12330.1	20
14	12331.1	20
15	12332.1	15
16	12333.1	15
17	12334.1	15
18	12335.1	15
19	12336.1	15
20	12337.1	10
21	12338.1	10
22	12339.1	10
23	12340.1	10
24	12341.1	10

Marking	Page 124 - 127
Coding	Page 122 - 123

Plug-in connection system PK-TS



PK-TS/... /5,08-F/15 TS15/TS35



Drawings

Dimensions

Spacing mm	5,08
Stripped length mm	6,00
PCB hole diameter mm	-
Dimensions (L x B x H)	
TS15	(Pole x 5,08 + 6,6 mm) x 20,6 x 35,5 mm
TS32	-
TS35	(Pole x 5,08 + 6,6 mm) x 20,6 x 35,5 mm

Cross sections

single wire (solid) mm ²	2,50
stranded wire (flexible) mm ²	2,50
stranded wire (with ferrules) mm ²	2,50

Output information

Rated voltage V	300 V	250 V
Rated current A	15 A	12 A (T60)
Cross section max. AWG/mm ²	28-12	2,50
Rating impulse voltage	-	4,00 kV
Rated torque/Screw size	-	0,5 Nm/M3
Dirt level	-	3

Materials

Insulating material/Flammability class	PA 6.6 V0 / UL 94 V0
Temperature Range	-30°C / +105°C
Clamping part	CuZn
Clamping cage/Eccentric	-
Contact pin	Cu
Cage tension spring	-
Wire protection	-

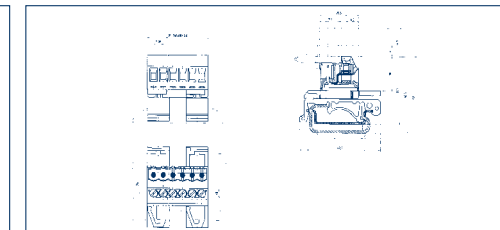
Order information

No. of poles	Cat.-No.	Qty.p.pck.
	●	
	green	
	(Ral 6018)	
2	13825.1	50
3	13826.1	50
4	13827.1	50
5	13828.1	50
6	13829.1	50
7	13830.1	40
8	13831.1	35
9	13832.1	30
10	13833.1	20
11	13834.1	20
12	13835.1	20
13	13836.1	20
14	13837.1	20
15	13838.1	15
16	13839.1	15
17	13840.1	15
18	13841.1	15
19	13842.1	15
20	13843.1	10
21	13844.1	10
22	13845.1	10
23	13846.1	10
24	13847.1	10

Accessories

Marking	Page 124 - 127
Coding	Page 122 - 123

PK-TS/... /5,08-F TS32/TS35



Spacing mm	5,08
Stripped length mm	6,00
PCB hole diameter mm	-
Dimensions (L x B x H)	
TS15	-
TS32	(Pole x 5,08 + 6,6 mm) x 20,6 x 40,5 mm
TS35	(Pole x 5,08 + 6,6 mm) x 20,6 x 35,5 mm

single wire (solid) mm ²	2,50
stranded wire (flexible) mm ²	2,50
stranded wire (with ferrules) mm ²	2,50

Rated voltage V	300 V	250 V
Rated current A	15 A	12 A (T60)
Cross section max. AWG/mm ²	28-12	2,50
Rating impulse voltage	-	4,00 kV
Rated torque/Screw size	-	0,5 Nm/M3
Dirt level	-	3

Insulating material/Flammability class	PA 6.6 V0 / UL 94 V0
Temperature Range	-30°C / +105°C
Clamping part	CuZn
Clamping cage/Eccentric	-
Contact pin	Cu
Cage tension spring	-
Wire protection	-

No. of poles	Cat.-No.	Qty.p.pck.
	●	
	green	
	(Ral 6018)	
2	13848.1	50
3	13849.1	50
4	13850.1	50
5	13851.1	50
6	13852.1	50
7	13853.1	40
8	13854.1	35
9	13855.1	30
10	13856.1	20
11	13857.1	20
12	13858.1	20
13	13859.1	20
14	13860.1	20
15	13861.1	15
16	13862.1	15
17	13863.1	15
18	13864.1	15
19	13865.1	15
20	13866.1	10
21	13867.1	10
22	13868.1	10
23	13869.1	10
24	13870.1	10

Marking	Page 124 - 127
Coding	Page 122 - 123

CONTA-CON

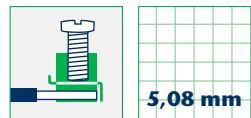
Plug-in connection system

PK-TS Connector

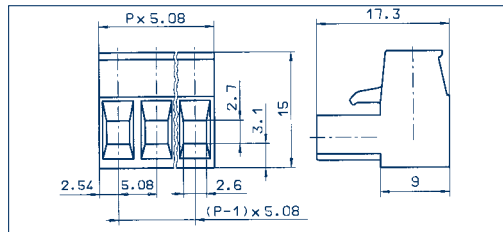
Connector for:

PK-TS/... /5,08/15

PK-TS/... /5,08



PKB 950/... /5,08



Strain-relief-clamp

Drawings

Connection principle

Dimensions

Spacing mm	5,08
Stripped length mm	6,00
PCB hole diameter mm	

Cross sections

single wire (solid) mm ²	2,50
stranded wire (flexible) mm ²	2,50
stranded wire (with ferrules) mm ²	2,50

Output information

Rated voltage V	300 V	250 V
Rated current A	15 A	12 A (T60)
Cross section max. AWG/mm ²	22-12	2,50
Rating impulse voltage	–	4,00 kV
Rated torque/Screw size	–	0,50 Nm/M3
Dirt level	–	3

Materials

Insulating material/Flammability class	PA 6.6 V0 / UL 94 V0
Temperature Range	-30°C / +105°C
Clamping part	CuZn
Clamping cage/Eccentric	–
Contact pin	–
Cage tension spring	–
Wire protection	–
Soldering lug	–
Contact Spring	CuSn

Order information

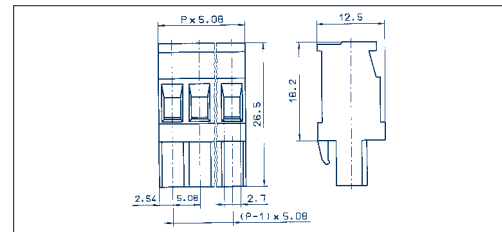
No. of poles	Cat.-No.	Qty.p.pck.
	green	
	(Ral 6018)	

2	11230.1	50
3	11231.1	50
4	11232.1	50
5	11233.1	50
6	11234.1	50
7	11235.1	50
8	11236.1	50
9	11237.1	50
10	11238.1	50
11	11239.1	50
12	11240.1	50
13	11241.1	50
14	11242.1	50
15	11243.1	50
16	11244.1	50
17	11245.1	50
18	11246.1	50
19	11247.1	50
20	11248.1	50
21	11249.1	50
22	11250.1	50
23	11251.1	50
24	11252.1	50

Accessories

Marking	Page 124 - 127
Coding	Page 122 - 123

PKB 1100/... /5,08



Strain-relief-clamp

Spacing mm	5,08
Stripped length mm	7,00

single wire (solid) mm ²	2,50
stranded wire (flexible) mm ²	2,50
stranded wire (with ferrules) mm ²	2,50

Rated voltage V	300 V	250 V
Rated current A	15 A	12 A (T60)
Cross section max. AWG/mm ²	22-10	2,50
Rating impulse voltage	–	4,00 kV
Rated torque/Screw size	–	0,50 Nm/M3
Dirt level	–	3

Insulating material/Flammability class	PA 6.6 V0 / UL 94 V0
Temperature Range	-30°C / +105°C
Clamping part	CuZn
Clamping cage/Eccentric	–
Contact pin	–
Cage tension spring	–
Wire protection	–
Soldering lug	–
Contact Spring	CuSn

Order information

No. of poles	Cat.-No.	Qty.p.pck.
	green	
	(Ral 6018)	

2	11305.1	50
3	11306.1	50
4	11307.1	50
5	11308.1	50
6	11309.1	50
7	11310.1	50
8	11311.1	50
9	11312.1	50
10	11313.1	50
11	11314.1	50
12	11315.1	50
13	11316.1	50
14	11317.1	50
15	11318.1	50
16	11319.1	50

Accessories

Marking	Page 124 - 127
Coding	Page 122 - 123

Plug-in connection system

PK-TS Connector

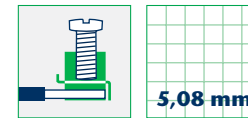
Connector for:

PK-TS/... /5,08/15 or

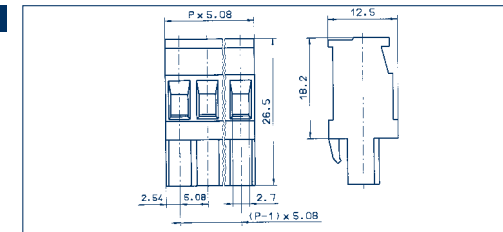
PK-TS/... /5,08-F/15

PK-TS/... /5,08 or

PK-TS/... /5,08-F



PKB 1110/... /5,08



Strain-relief-clamp

Connection principle

Dimensions

Spacing mm	5,08
Stripped length mm	7,00
PCB hole diameter mm	–

Cross sections

single wire (solid) mm ²	2,50
stranded wire (flexible) mm ²	2,50
stranded wire (with ferrules) mm ²	2,50

Output information

Rated voltage V	300 V	250 V
Rated current A	15 A	12 A (T60)
Cross section max. AWG/mm ²	22-10	2,50
Rating impulse voltage	–	4,00 kV
Rated torque/Screw size	–	0,50 Nm/M3
Dirt level	–	3

Materials

Insulating material/Flammability class	PA 6.6 V0 / UL 94 V0
Temperature Range	-30°C / +105°C
Clamping part	CuZn
Clamping cage/Eccentric	–
Contact pin	–
Cage tension spring	–
Wire protection	–
Soldering lug	–
Contact Spring	CuSn

Order information

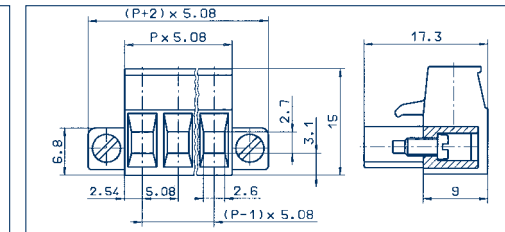
No. of poles	Cat.-No.	Qty.p.pck.
	green	
	(Ral 6018)	

2	11339.1	50
3	11340.1	50
4	11341.1	50
5	11342.1	50
6	11343.1	50
7	11344.1	50
8	11345.1	50
9	11346.1	50
10	11347.1	50
11	11348.1	50
12	11349.1	50
13	11350.1	50
14	11351.1	50
15	11352.1	50
16	11353.1	50

Accessories

Marking	Page 124 - 127
Coding	Page 122 - 123

PKB 950/... /5,08-F



Strain-relief-clamp

Spacing mm	5,08
Stripped length mm	6,00

single wire (solid) mm ²	2,50
stranded wire (flexible) mm ²	2,50
stranded wire (with ferrules) mm ²	2,50

Rated voltage V	300 V	250 V
Rated current A	15 A	12 A (T60)
Cross section max. AWG/mm ²	22-12	2,50
Rating impulse voltage	–	4,00 kV
Rated torque/Screw size	–	0,50 Nm/M3
Dirt level	–	3

Insulating material/Flammability class	PA 6.6 V0 / UL 94 V0
Temperature Range	-30°C / +105°C
Clamping part	CuZn
Clamping cage/Eccentric	–
Contact pin	–
Cage tension spring	–
Wire protection	–
Soldering lug	–
Contact Spring	CuSn

Order information

No. of poles	Cat.-No.	Qty.p.pck.
	green	
	(Ral 6018)	

2	11277.1	50
3	11278.1	50
4	11279.1	50
5	11280.1	50
6	11281.1	50
7	11282.1	50
8	11283.1	50
9	11284.1	50
10	11285.1	50
11	13212.1	50
12	13213.1	50
13	13214.1	50
14	13215.1	50
15	13216.1	50
16	13217.1	50
17	13218.1	50
18	13219.1	50
19	13220.1	50
20	13221.1	50
21	13222.1	50
22	13223.1	50
23	13707.1	50
24	13708.1	50

Accessories

Marking	Page 124 - 127
Coding	Page 122 - 123

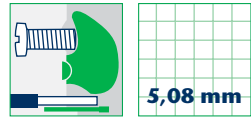
Plug-in connection system

PK-TS Connector

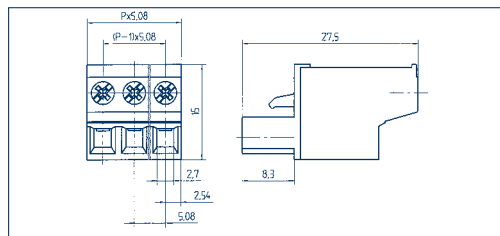
Connector for:

PK-TS/... /5,08/15

PK-TS/... /5,08



PBT 1200/... /5,08



Drawings

Connection principle

Dimensions

Spacing mm	5,08
Stripped length mm	10,00
PCB hole diameter mm	-

Cross sections

single wire (solid) mm ²	2,50
stranded wire (flexible) mm ²	2,50
stranded wire (with ferrules) mm ²	2,50

Output information

Rated voltage V	300 V	250 V
Rated current A	15 A	12 A (T60)
Cross section max. AWG/mm ²	22-12	2,50
Rating impulse voltage	-	4,00 kV
Rated torque/Screw size	-	0,50 Nm/M2,5
Dirt level	-	3

Materials

Insulating material/Flammability class	PA 6.6 V0 / UL 94 V0
Temperature Range	-30°C / +105°C
Clamping part	-
Clamping cage/Eccentric	Fe/Fe
Contact pin	-
Cage tension spring	-
Wire protection	-
Soldering lug	-
Contact Spring	CuSn

Order information

	No. of poles	Cat.-No.	Qty.p.pck.
Standard colour(s)		● green	
(further colours on request, see page 5)		(Ral 6018)	
	2	11354.1	50
	3	11355.1	50
	4	11356.1	50
	5	11357.1	50
	6	11358.1	50
	7	11359.1	50
	8	11360.1	50
	9	11361.1	50
	10	11362.1	50
	11	11363.1	50
	12	11364.1	50
	13	11365.1	50
	14	11366.1	50
	15	11367.1	50
	16	11368.1	50
	17	11369.1	50
	18	11370.1	50
	19	11371.1	50
	20	11372.1	50
	21	11373.1	50
	22	11374.1	50
	23	11375.1	50
	24	11376.1	50

Accessories

Marking	Page 124 - 127
Coding	Page 122 - 123