

Plug-in adapter for tension spring terminal block ZRK in spacing 5,08 mm

CONTA-CON in combination with CONTA-CONNECT



ZRK 2,5/2A in combination within STL 950/10/5,08-G-L



ZRK 2,5/3A in combination within STL 950/10/5,08-G-L



ZRK 2,5/4A in combination within STL 950/10/5,08-G-L



ZRKD 2,5 in combination within STL 950/10/5,08-G-L



ZSRK 2,5/2A in combination within STL 950/10/5,08-G-L



ZSRK 2,5/3A with accentuating tool BW 10

Standard tension spring terminals **ZSRK 2,5**; **ZRK 2,5** and **ZRKD 2,5** from the **CONTA-CONNECT** range can be plugged in at a later stage by using headers **STL 950/... /5,08-G-L**.

Headers are designed for fast, easy and safe connection of the different levels.

Accentuating tools **BW** (1-10 poles available) serve to open up to 10 springs at a time. This is how to facilitate and speed up installation.

ZRK tension spring technology along with **CONTA-CON** printed circuit board plug-in connectors

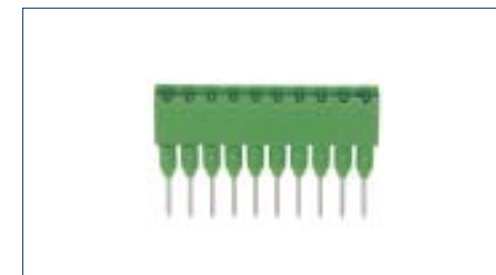
enable you to tremendously reduce high-cost final assembly time and to assure speedy parts replacement during service and maintenance. All combinations allow for coding without loss of poles (cf. page 122, Coding).

Note: Plug-in connectors may not be connected or disconnected with a voltage exceeding 42 V. When using tension spring terminals with headers **STL 950/... /5,08-G-L** on the distributing side, the rated voltage must not exceed 50 V because live headers are not touch-proof under unprotected conditions.

Plug-in adapter for tension spring terminal block in spacing 5,08



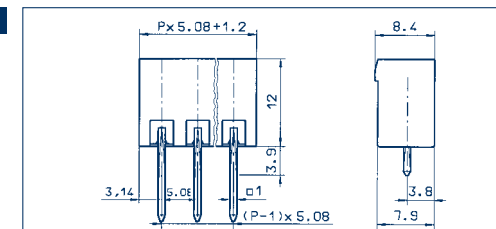
STL 950/... /5,08-G-L



BW 1...10



Drawings



Dimensions

Spacing mm	5,08
Stripped length mm	-
PCB hole diameter mm	-
Dimensions (L x B x H)	-
Cross sections	
single wire (solid) mm ²	2,50
stranded wire (flexible) mm ²	5,50
stranded wire (with ferrules) mm ²	2,50

Output information

Rated voltage V	300 V	250 V
Rated current A	15 A	12 A (T60)
Cross section max. AWG/mm ²	-	-
Rating impulse voltage	-	4,00 kV
Rated torque/Screw size	-	-
Dirt level	-	3

Materials

Insulating material/Flammability class	PA 6.6 V0 / UL 94 V0
Temperature Range	-30°C / +105°C
Clamping part	-
Clamping cage/Eccentric	-
Contact pin	Cu
Cage tension spring	-
Wire protection	-
Soldering lug	-
Contact Spring	-

Order information

No. of poles	Cat.-No.	Qty.p.pck.	No. of poles	Cat.-No.	Qty.p.pck.
	● green (Ral 6018)			● schwarz (Ral 9011)	
1	-	50	1	3779.0	50
2	13154.1	50	2	3779.0	50
3	13155.1	50	3	3780.0	50
4	13156.1	50	4	3781.0	50
5	13157.1	50	5	3782.0	50
6	13158.1	50	6	3802.0	50
7	13159.1	50	7	3803.0	50
8	13160.1	50	8	3804.0	50
9	13161.1	50	9	3805.0	50
10	13162.1	50	10	3806.0	50

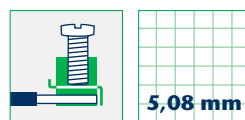
Accessories

Coding	Page 122 - 123
--------	----------------

CONTA-CON

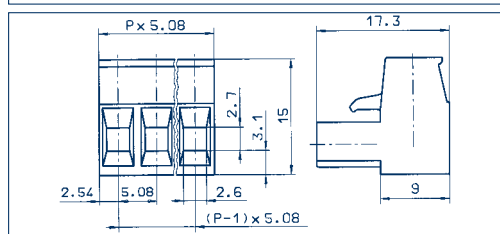
Plug-in adapter for tension spring terminal block in spacing 5,08

Connector for:
STL 950/... /5,08-G-L



Drawings

PKB 950/... /5,08



Strain-relief-clamp

Connection principle

Dimensions

Spacing mm	5,08
Stripped length mm	6,00
PCB hole diameter mm	-

Cross sections

single wire (solid) mm ²	2,50
stranded wire (flexible) mm ²	2,50
stranded wire (with ferrules) mm ²	2,50

Output information

Rated voltage V	300 V	250 V
Rated current A	15 A	12 A (T60)
Cross section max. AWG/mm ²	22-12	2,50
Rating impulse voltage	-	4,00 kV
Rated torque/Screw size	-	0,50 Nm/M3
Dirt level	-	3

Materials

Insulating material/Flammability class	PA 6.6 V0 / UL 94 V0
Temperature Range	-30°C / +105°C
Clamping part	CuZn
Clamping cage/Eccentric	-
Contact pin	-
Cage tension spring	-
Wire protection	-
Soldering lug	-
Contact Spring	CuSn

Order information

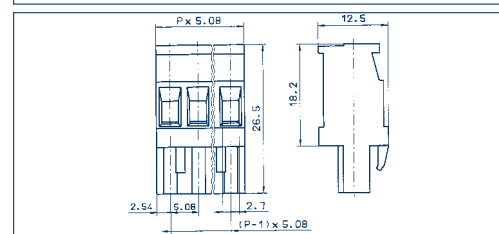
No. of poles	Cat.-No.	Qty.p.pck.
	● green	
	(Ral 6018)	

2	11230.1	50
3	11231.1	50
4	11232.1	50
5	11233.1	50
6	11234.1	50
7	11235.1	50
8	11236.1	50
9	11237.1	50
10	11238.1	50

Accessories

Marking	Page 124 - 127
Coding	Page 122 - 123

PKB 1100/... /5,08



Strain-relief-clamp

Connection principle

Spacing mm	5,08
Stripped length mm	7,00
PCB hole diameter mm	-

Cross sections

single wire (solid) mm ²	2,50
stranded wire (flexible) mm ²	2,50
stranded wire (with ferrules) mm ²	2,50

Output information

Rated voltage V	300 V	250 V
Rated current A	15 A	12 A (T60)
Cross section max. AWG/mm ²	22-10	2,50
Rating impulse voltage	-	4,00 kV
Rated torque/Screw size	-	0,50 Nm/M3
Dirt level	-	3

Materials

Insulating material/Flammability class	PA 6.6 V0 / UL 94 V0
Temperature Range	-30°C / +105°C
Clamping part	CuZn
Clamping cage/Eccentric	-
Contact pin	-
Cage tension spring	-
Wire protection	-
Soldering lug	-
Contact Spring	CuSn

Order information

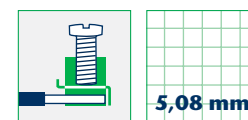
No. of poles	Cat.-No.	Qty.p.pck.
	● green	
	(Ral 6018)	

2	11305.1	50
3	11306.1	50
4	11307.1	50
5	11308.1	50
6	11309.1	50
7	11310.1	50
8	11311.1	50
9	11312.1	50
10	11313.1	50

Marking	Page 124 - 127
Coding	Page 122 - 123

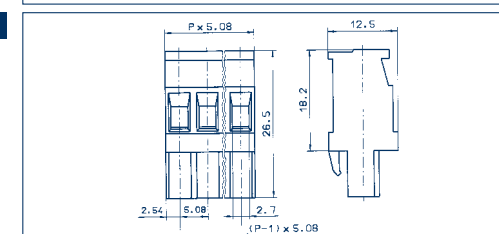
Plug-in adapter for tension spring terminal block in spacing 5,08

Connector for:
STL 950/... /5,08-G-L



Drawings

PKB 1110/... /5,08



Strain-relief-clamp

Connection principle

Spacing mm	5,08
Stripped length mm	7,00
PCB hole diameter mm	-

Cross sections

single wire (solid) mm ²	2,50
stranded wire (flexible) mm ²	2,50
stranded wire (with ferrules) mm ²	2,50

Output information

Rated voltage V	300 V	250 V
Rated current A	15 A	12 A (T60)
Cross section max. AWG/mm ²	22-10	2,50
Rating impulse voltage	-	4,00 kV
Rated torque/Screw size	-	0,50 Nm/M3
Dirt level	-	3

Materials

Insulating material/Flammability class	PA 6.6 V0 / UL 94 V0
Temperature Range	-30°C / +105°C
Clamping part	CuZn
Clamping cage/Eccentric	-
Contact pin	-
Cage tension spring	-
Wire protection	-
Soldering lug	-
Contact Spring	CuSn

Order information

No. of poles	Cat.-No.	Qty.p.pck.
	● green	
	(Ral 6018)	

2	11339.1	50
3	11340.1	50
4	11341.1	50
5	11342.1	50
6	11343.1	50
7	11344.1	50
8	11345.1	50
9	11346.1	50
10	11347.1	50

Marking	Page 124 - 127
Coding	Page 122 - 123